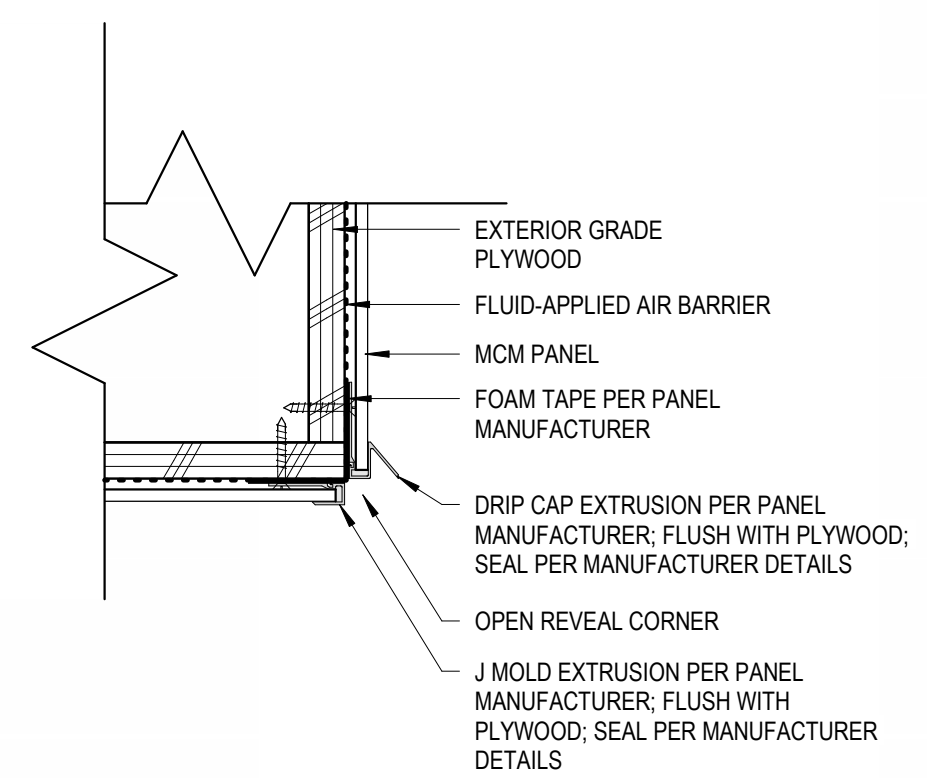
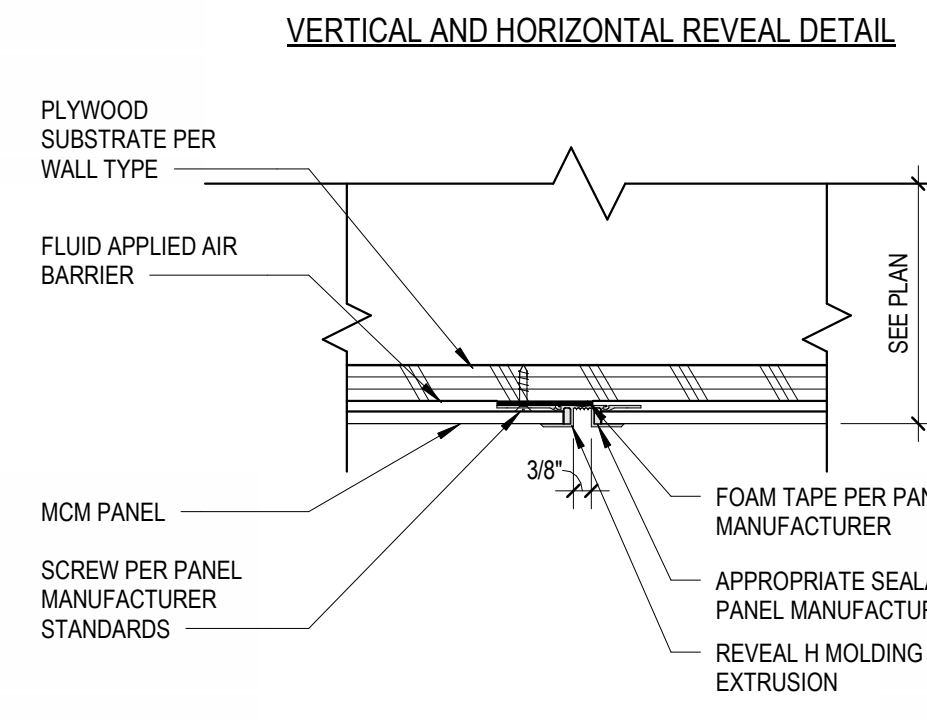


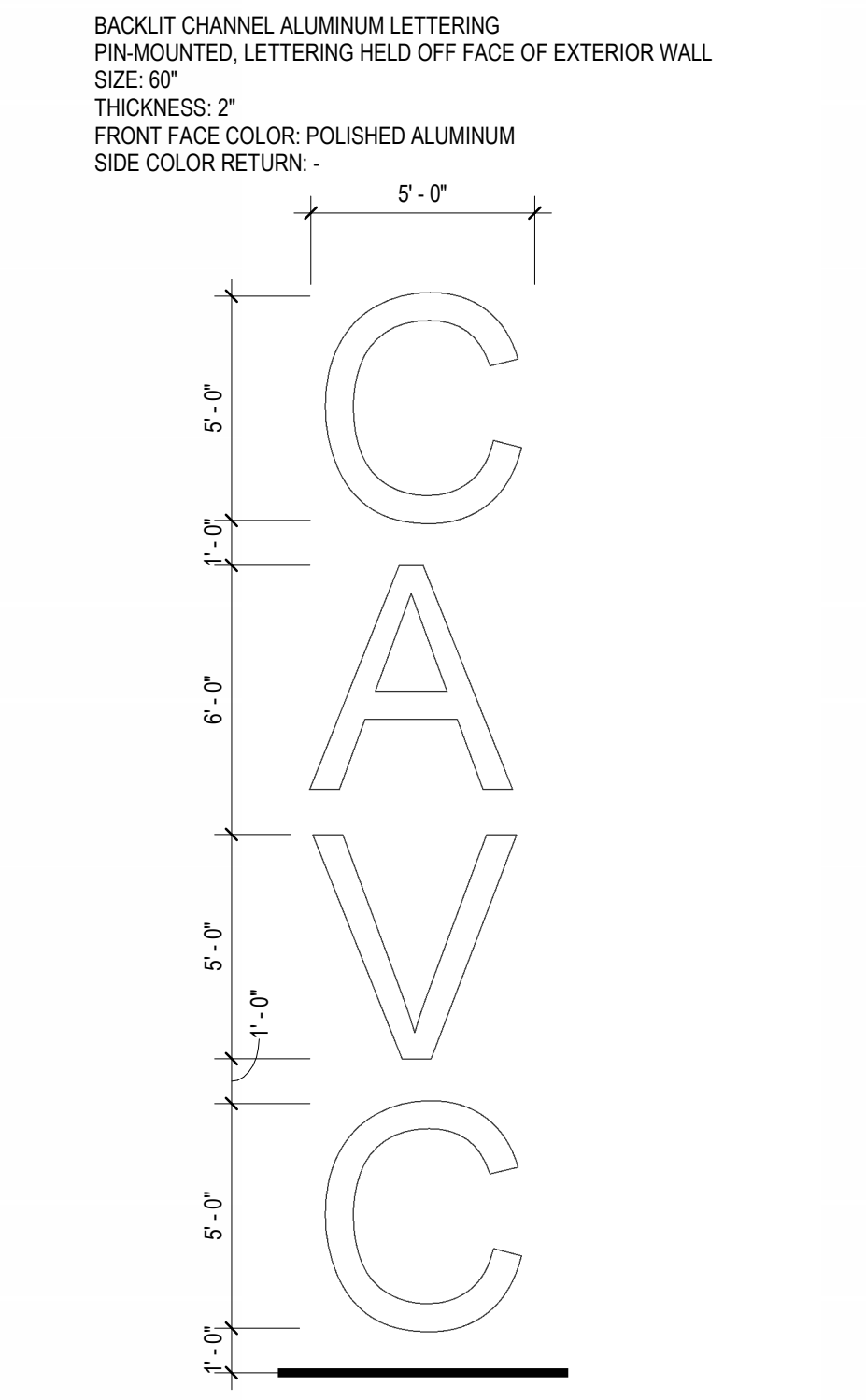
10/19/2024 10:48:39  
I:\Autodesk Docs\Collinsville\CUSD10\_CAVC\_NewBuilding\22-3613.02\_CollinsvilleCUSD10\_CAVC\_New\_Bldg\_2022\_DD.rvt  
Copyright © 2024 FGM ARCHITECTS INC.



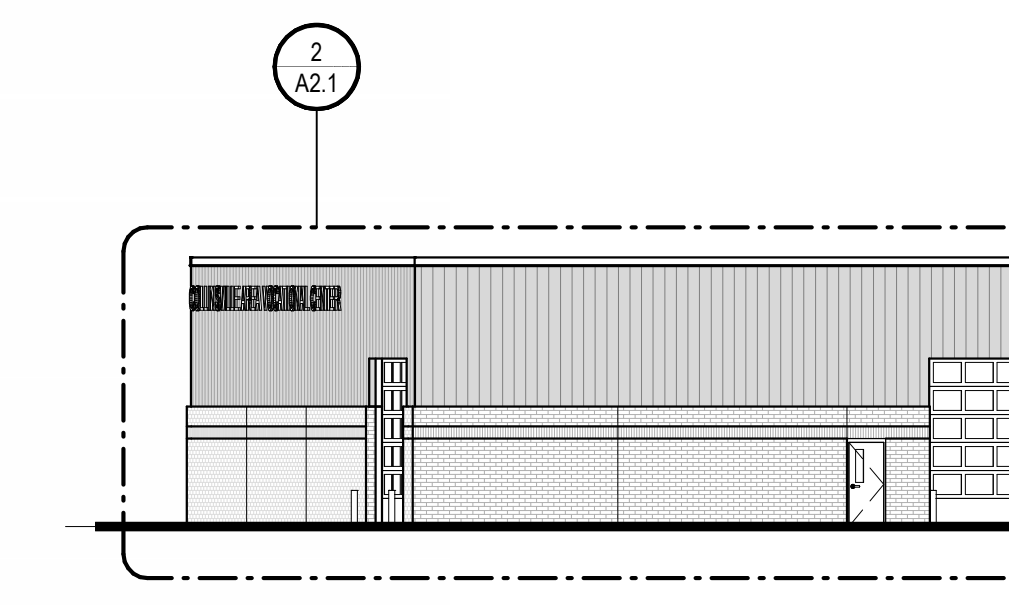
12 | MCM OPEN CORNER DETAIL  
3" = 1'-0"



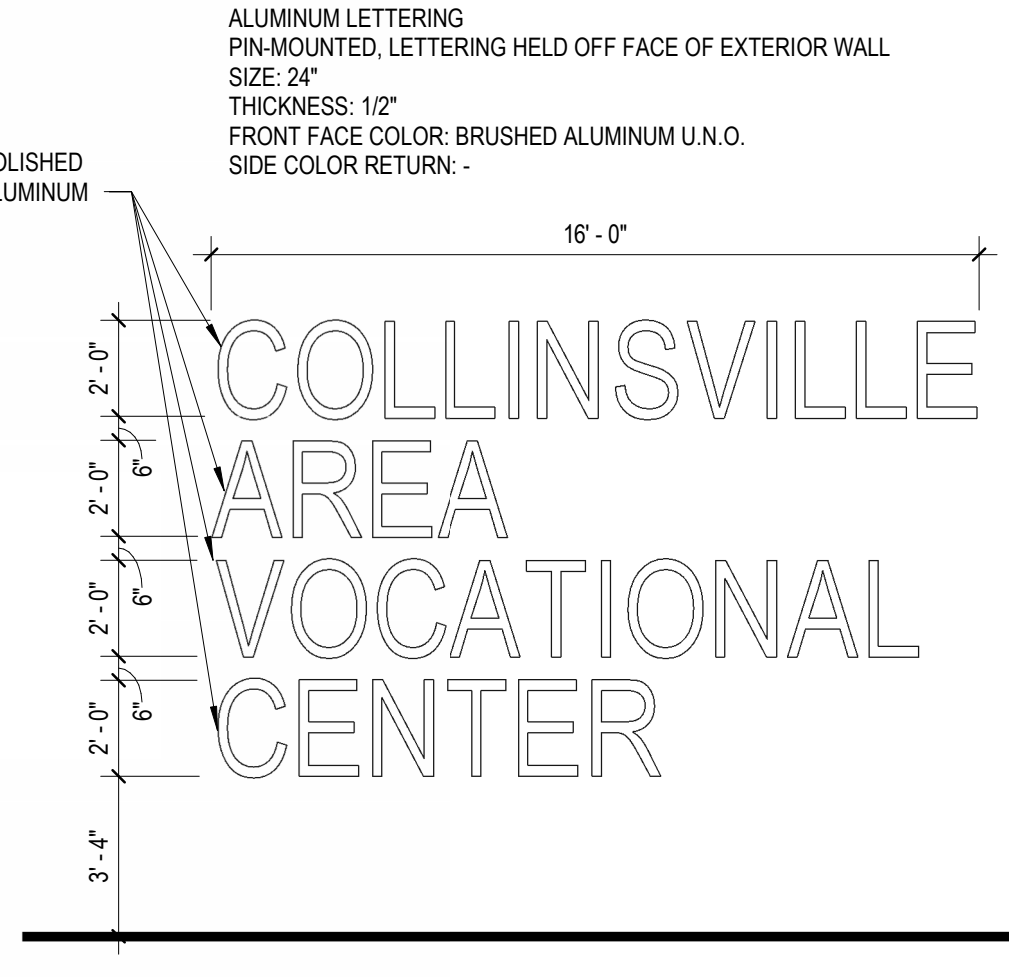
11 | MCM REVEAL EXTRUSION DETAIL  
3" = 1'-0"



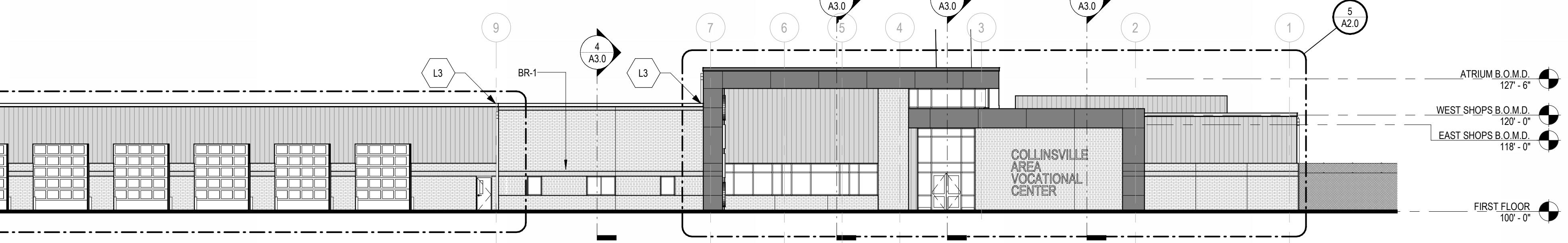
9 | EXTERIOR SIGNAGE  
1/4" = 1'-0"



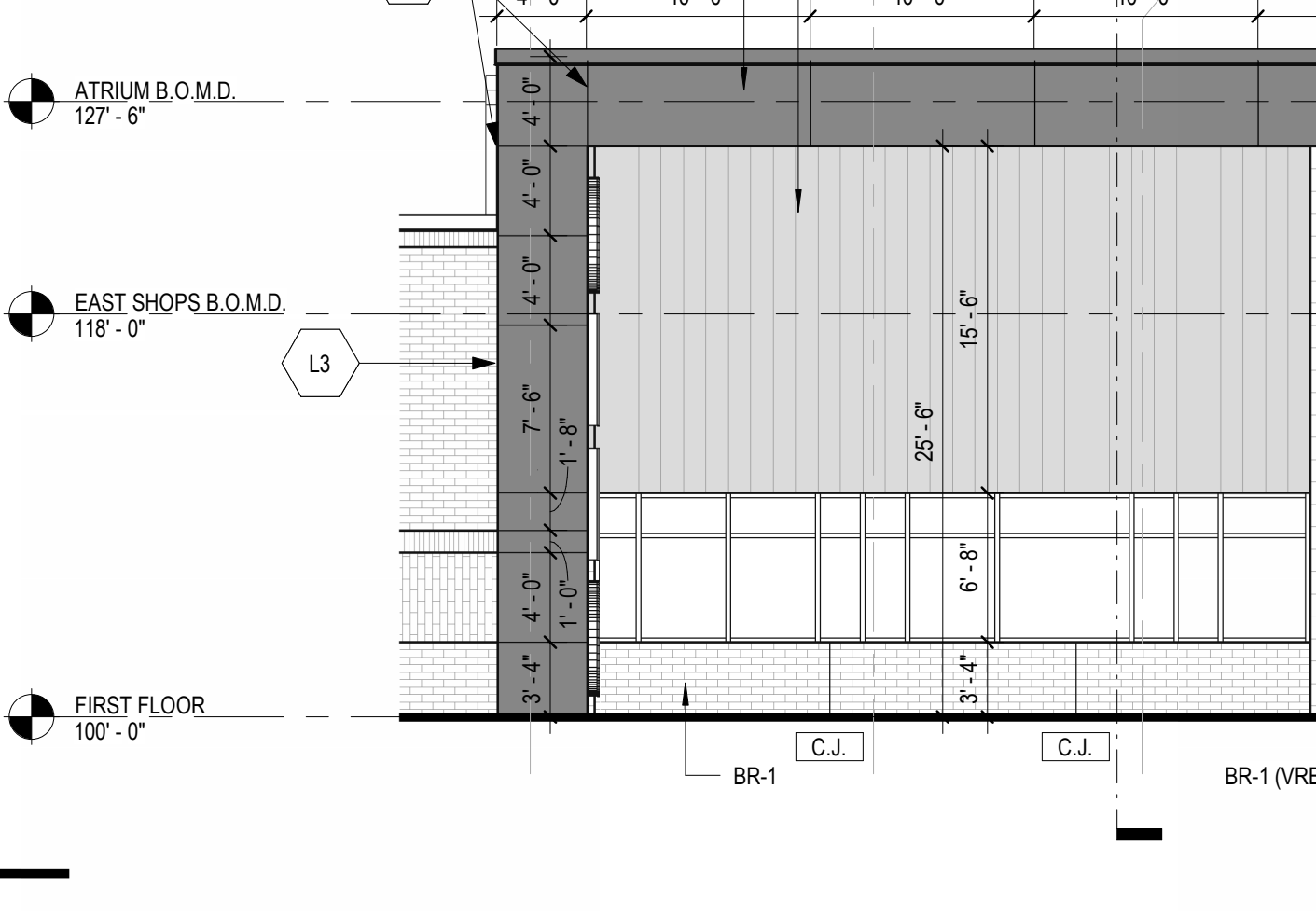
2 | SOUTH ELEVATION  
1/16" = 1'-0"



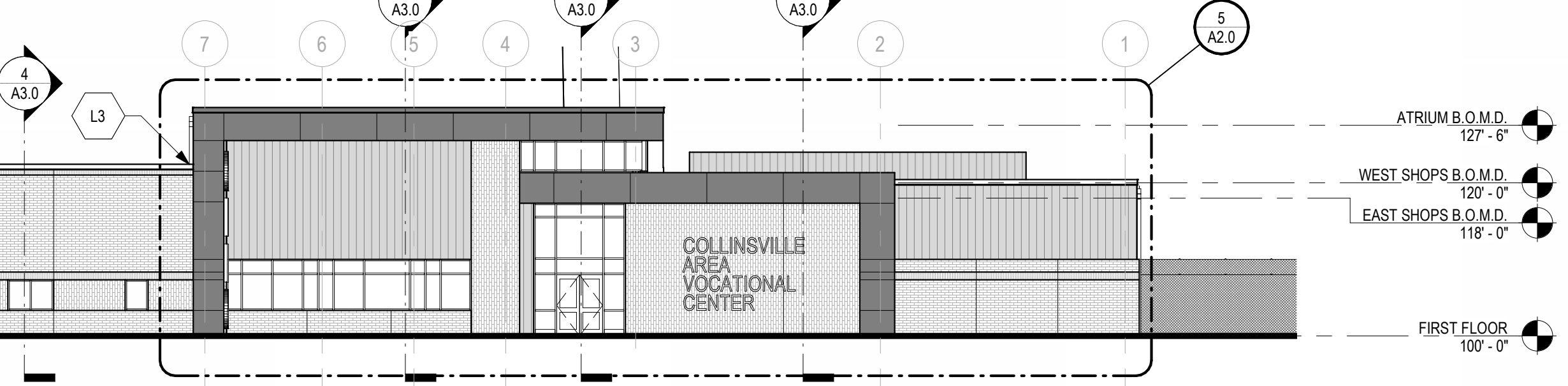
7 | EXTERIOR SIGNAGE  
1/4" = 1'-0"



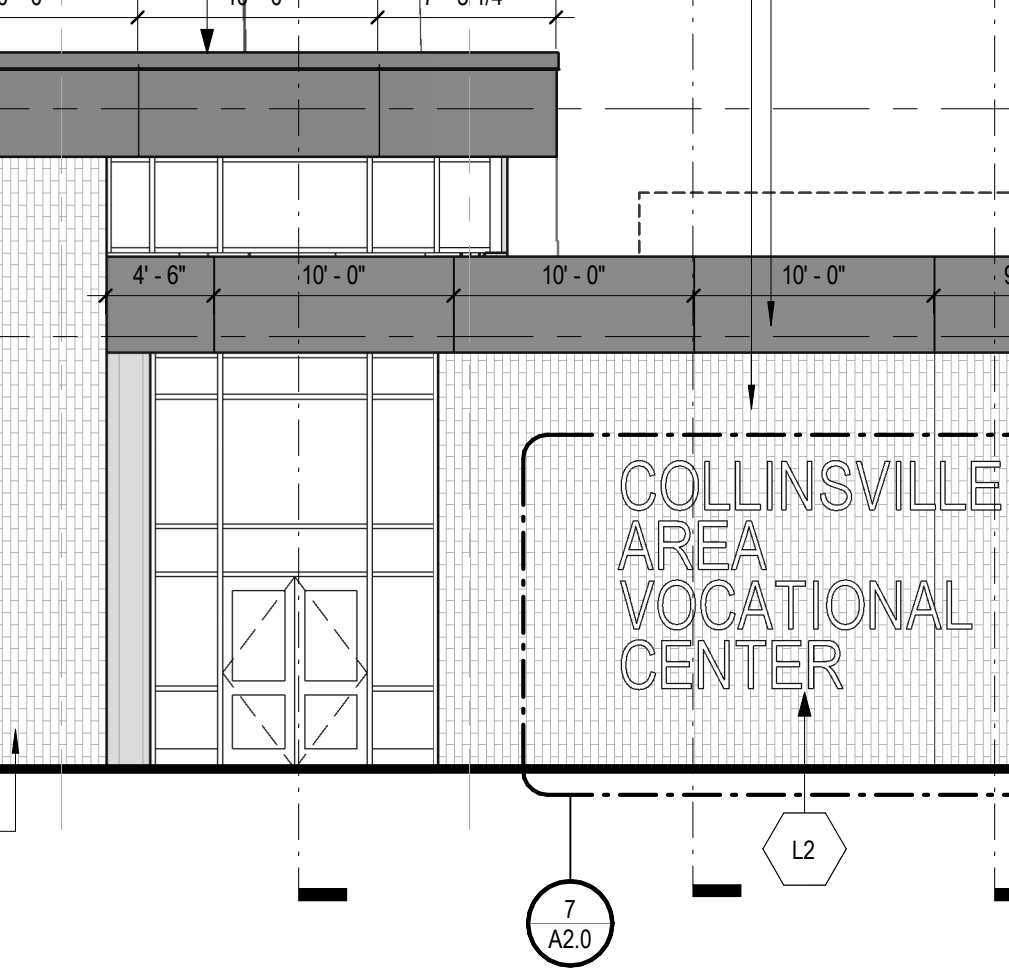
6 | ENLARGED EAST ELEVATION  
1/8" = 1'-0"



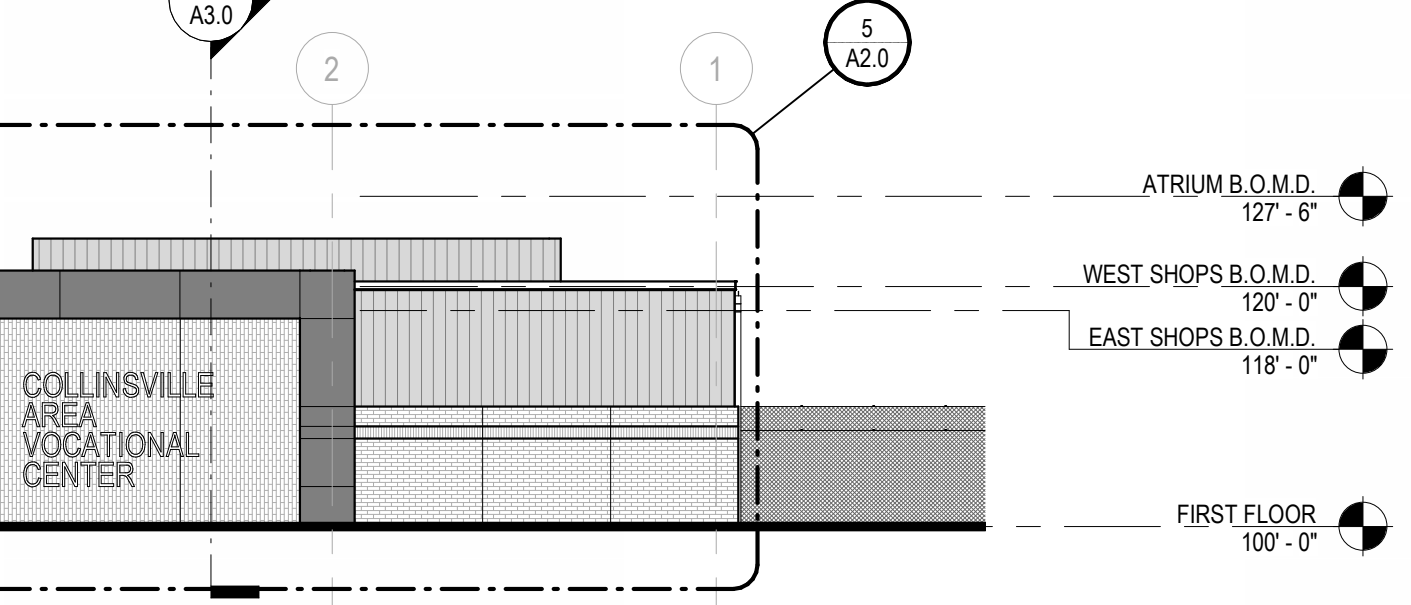
8 | EXTERIOR SIGNAGE  
1/4" = 1'-0"



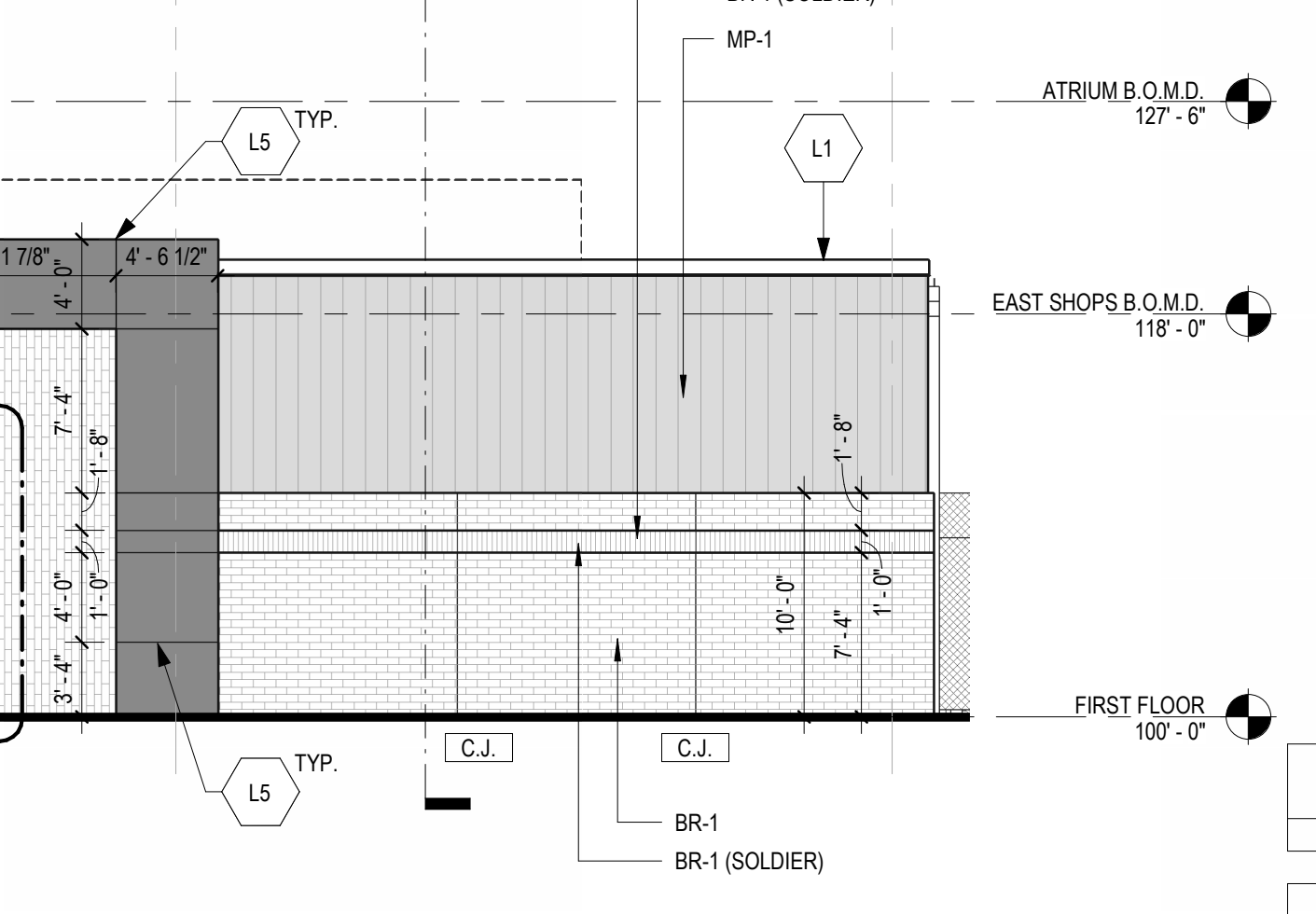
4 | WEST ELEVATION  
1/16" = 1'-0"



3 | EAST ELEVATION  
1/16" = 1'-0"



10 | ENLARGED NORTH ELEVATION  
1/8" = 1'-0"



1 | NORTH ELEVATION  
1/16" = 1'-0"

**EXTERIOR MATERIALS LEGEND**

**MASONRY VENEER BRICK (DESIGN BASIS)**  
BR-1 FACE BRICK  
MFR: ENDICOTT CLAY PRODUCTS CO.  
UTILITY  
SIZE: 3 5/8"W x 3 5/8"H x 11 5/8"L  
COLOR: DARK IRONSPOT SMOOTH  
AS BLDG. BRICK VENEER AS INDICATED

**FORMED METAL WALL PANEL (DESIGN BASIS)**  
ABBREV. AS SHOWN:  
MP-1 METAL PANEL TO BE:  
MFR: ATAS INTERNATIONAL, INC.  
STYLE: BOXED RIB PROFILE (TBO)  
COLOR: THUNDER GREY  
SIZES: SEE EXTERIOR ELEVATIONS  
TEXTURE: N/A

MP-2 METAL PANEL TO BE:  
MFR: ATAS INTERNATIONAL, INC.  
STYLE: STERACORE FLUSH PANEL  
COLOR: MATTE BLACK  
SIZES: SEE EXTERIOR ELEVATIONS  
TEXTURE: N/A

MP-3 METAL PANEL TO BE:  
MFR: KNOTWOOD ARCHITECTURAL SYSTEMS  
STYLE: STERACORE FLUSH PANEL  
COLOR: BUSH CHERRY  
SIZES: SEE REFLECTED CEILING PLAN FOR SOFFIT PANEL LAYOUT  
TEXTURE: N/A

**STOREFRONT**  
ABBREV. AS SHOWN:  
SF-1 STOREFRONT BASIS OF DESIGN TO BE:  
MFR: ???  
STYLE: MULTIPLANE CENTER SET  
COLOR: BLACK  
SIZES: SEE A5.2 FOR GLAZING TYPES  
REFER TO A5 SERIES WINDOW TYPES SHEET FOR MORE INFO

CW-1 CURTAINWALL BASIS OF DESIGN TO BE:  
MFR: ???  
STYLE: ???  
COLOR: BLACK  
SIZES: SEE A5.2 FOR GLAZING TYPES  
REFER TO A5 SERIES WINDOW TYPES SHEET FOR MORE INFO

**ROOF FASCIA**  
FA-1/FA-2 FASCIA ROOF EDGE TO BE:  
MFR: ???  
STYLE: ???  
SIZE: #8" FACE HEIGHT  
FA-1 COLOR: MATTE BLACK

| EXTERIOR ELEVATIONS KEYED NOTES |  |
|---------------------------------|--|
| TAG                             | DESCRIPTION  |
| L1                              | PRE-FINISHED METAL COPING  |
| L2                              | PIN-MOUNTED STAND OFF, EXTERIOR GRADE DIMENSIONAL ALUMINUM LETTERING. 1/2" THICK FONT TBO. SEE ELEVATIONS FOR DIMENSIONS.        |
| L3                              | BUILDING EXPANSION JOINT   |
| L4                              | PIN-MOUNTED STAND OFF, BACKLIT, EXTERIOR GRADE DIMENSIONAL ALUMINUM LETTERING. 2" THICK FONT TBO. SEE ELEVATIONS FOR DIMENSIONS. |
| L5                              | MCM REVEAL H MOLDING EXTRUSION. SEE DTL. 1/1A2.0 FOR ADDITIONAL INFORMATION.   |

**FGM Architects Inc.**  
475 Regency Park, Suite 325  
O'Fallon, Illinois 62269  
618.624.3364 OFFICE  
618.624.3369 FAX  
ILLINOIS PROFESSIONAL DESIGN FIRM #184-000350

**CIVIL**  
OATES ASSOCIATES, INC.  
200 LINCOLN CENTER, SUITE 1  
COLLINSVILLE, IL 62234  
(618) 383-0001  
ILL. STATE CERTIFICATE OF AUTHORITY NO. 184-001515

**STRUCTURAL**  
ASDG, LLC  
1009 LINCOLN HIGHWAY  
PARKVIEW HEIGHTS, IL 62208  
(618) 628-0887 (O)  
ILL. STATE CERTIFICATE OF AUTHORITY NO. 184-003843

**MEP**  
RTM ENGINEERING CONSULTANTS  
1001 W. WASHINGTON STREET, SUITE 100  
BELLVILLE, IL 62220  
(618) 277-3200 (O)  
ILL. STATE CERTIFICATE OF AUTHORITY NO. 184-00077-0002

**LANDSCAPE**  
DERMODY & ASSOCIATES, LLC  
238 COMMERCE DRIVE  
MARIETTA HEIGHTS, MO. 63043  
(314) 296-8871 (O)  
ILL. STATE CERTIFICATE OF AUTHORITY NO. 157-002375

**NOT FOR CONSTRUCTION**

**FOR REVIEW ONLY**  
Not for regulatory approval, permit or construction.  
The information on this document is preliminary or incomplete, not for construction, recording purposes, or implementation.

| ISSUANCE |      |
|----------|------|
| NO       | DATE |
|          |      |
|          |      |
|          |      |
|          |      |
|          |      |
|          |      |
|          |      |
|          |      |
|          |      |

**COLLINSVILLE AREA VOCATIONAL CENTER NEW BUILDING**  
BOARD OF EDUCATION COLLINSVILLE CUSD 10  
COLLINSVILLE, IL, 62234  
50% CONSTRUCTION DOCUMENTS

EXTERIOR ELEVATIONS

SHEET NO.  
**A2.0**

JOB NO. 22-3613.02  
© 2024 FGM Architects Inc.









## 1. PRODUCT NAME

**KNOTWOOD™**  
Cladding System

## 2. MANUFACTURER

**OmniMax International**  
30 Technology Pkwy. S, Suite 400  
Peachtree Corners, GA 30092  
Phone: 855.566.8966

## 3. PRODUCT DESCRIPTION

Knotwood™ Cladding is made from 100% aluminum protected by a durable powder coat finish. It's immune to fire, rust, rot, insects and will never warp, split or crack. Even extreme heat or freezing cold can't damage Knotwood™. Sublimated in Knotwood's award winning woodgrain finish or custom solid color coated, it meets the highest finishing standards in the world.

Knotwood's unique hidden fastener system creates a clean finish. The interlocking system makes Knotwood™ cladding a smart choice when water penetration is a concern. In the event repairs are needed, Knotwood's unique top-down interlocking board system installation makes bottom up repairs fast and simple. In addition, Knotwood™ cladding requires next to no maintenance.

**Sizes:**  
Cladding comes in 18' 6" lengths.  
Accessories come in 18' 6" lengths.

**Colors:**  
A wide variety of over 30 woodgrain colors as well as solid and custom color options.

## 4. TECHNICAL DATA

Material/Paint & Coatings Data:

- 100% Recyclable
- VOC-free coatings
- Lead free finishes
- LEED Certified Green Building Material

Non-Combustible Ratings:

- ASTM E84
- ASTM E84-17
- Class A Rating

Florida Building Code Ratings:

- Meets requirements of Section 1620
- Meets requirements of Section 1625
- Meets requirements of Section 1626

## 5. INSTALLATION

Interlocking cladding boards are attached with a unique hidden fastener system to create a clean finish, hiding unsightly screws or rivets.

## 6. AVAILABILITY & COST

**Availability:**

Cladding systems are available through Knotwood™ distributors. A complete line of related Knotwood™ systems are available to complete any cladding system. In addition, custom color matching is available.

**Cost:**

Contact Knotwood™ product distributors for current pricing. **Contact at - [www.knotwood.com/contact-us](http://www.knotwood.com/contact-us)**

## 7. WARRANTY

Knotwood™ expressly warrants for a limited lifetime that its aluminum products are free from manufacturing defects in material or workmanship when installed according to Knotwood™ specifications and properly maintained. The warranty provides for a 15-year warranty for the Knotwood finish, including checking/cracking, chalking, color change, gloss retention and adhesion of finish.

***The full warranty details are provided at [www.knotwood.com/warranty](http://www.knotwood.com/warranty)***

## 8. MAINTENANCE

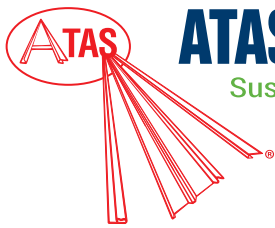
Our products are designed to be effortless and low maintenance. Wash the surface with a mild solution of pure soap or mild non-abrasive kitchen detergent in warm water. Application should be with a sponge, soft cloth or soft bristle nylon brush, and should be gentle to prevent shiny spots. If cared for in this way, your Knotwood™ application should give many years of easy maintenance life.

## 9. TECHNICAL SERVICES

Complete technical information and literature available at **[www.knotwood.com/architects](http://www.knotwood.com/architects) - *Click here.***







## 1. PRODUCT NAME

### VERSA-LINE PANEL

### VSN120, VSN160

## 2. MANUFACTURER

ATAS INTERNATIONAL, INC.

Website: [www.atas.com](http://www.atas.com)

Email: [info@atas.com](mailto:info@atas.com)

Corporate Headquarters:

Allentown, PA 18106

Phone: (800) 468-1441

Western Facility:

Mesa, AZ 85204

Phone: (480) 558-7210

## 3. PRODUCT DESCRIPTION

### Basic Uses:

Versa-Line is a rainscreen style wall system that requires a water and air barrier system behind it. The panel forms architectural shadow lines in its horizontal installation.

### Composition & Materials:

**Standard Offerings:** Versa-Line panels are produced from .032 and .040 aluminum

**Special Offerings:** .7, .8 mm zinc; 16 oz. copper, subject to minimum quantities and lead time.

### Sizes:

Versa-Line panels are available in standard sizes with a panel width of 12-3/8", 16-3/8" and 1" height. Panel lengths are cut to customer specifications with a minimum of 2'-0" and maximum of 25'-0". Custom widths available with a minimum of 8" and a maximum of 20-5/8". Specify with or without striations.

### Colors & Finishes:

A choice of over 40 stock colors is available in a 70% PVDF finish. (Request color chart or chips). Custom colors available. An anodized finish is available in Clear Satin or Dark Bronze. Texture can be smooth or stucco embossed. Perforations are available.

## 4. TECHNICAL DATA

70% PVDF based finishes tested by paint supplier for:

- Dry Film Thickness: ASTM D 1005, ASTM D 1400, ASTM D 4138 or ASTM D 5796
- Specular Gloss: ASTM D 523
- Pencil Hardness: ASTM D 3363
- T-Bend Flexibility: ASTM D 4145
- Mandrel Bend Flexibility: ASTM D 522
- Impact Resistance: ASTM D 2794
- Adhesion: ASTM D 3359
- Water Immersion Resistance: ASTM D 870
- Abrasion Resistance: ASTM D 968
- Acid Resistance: ASTM D 1308
- Acid Rain Resistance (Kesternich): ASTM G

87 or DIN 50018

- Salt Spray: ASTM B 117
- Cyclic Salt Spray: ASTM D 5894 and ASTM D 5487
- Humidity Resistance: ASTM D 2247
- Accelerated Weathering: ASTM D 822 and ASTM G 155, ASTM G 151 or ASTM G 153
- Color Retention, Florida Exposure: ASTM D 2244
- Chalking Resistance: ASTM D 4214
- Cleveland Condensing Cabinet: ASTM D 4585
- Cure Test, MEK Resistance: ASTM D 5402
- Alkali Resistance, Sodium Hydroxide: ASTM D 1308, Procedure 7.2
- Flame Spread Rating: ASTM E 84
- Organic coatings meet requirements of AAMA 2605 when applied to aluminum.

### Panel testing/ratings:

- Aluminum: ASTM B 209
- Coil Coating: ASTM A 755

## 5. INSTALLATION

Versa-Line may be installed horizontally or vertically. Panels can be installed over a solid substrate covered with an appropriate water and air barrier system or sub-girt system in a rainscreen application. Installation details and hands-on training via seminars are available through ATAS. Visit [www.atas.com](http://www.atas.com) for more information.

## 6. AVAILABILITY & COST

### Availability:

Versa-Line panels are available through ATAS product distributors. A complete line of related components and trim accessories is available to complete the system. In addition, a complete line of rainware and perimeter roof edge trims can be

supplied by ATAS to complement the application. Flat sheet and/or coil stock is available in matching colors for fabrication of related components by the installing contractor. \*Subject to minimum quantities and extended lead times.

### Cost:

Contact ATAS product distributors for current pricing.

## 7. WARRANTY

The fluoropolymer, 70% PVDF finish carries a limited warranty against chalking and fading.

## 8. MAINTENANCE

Versa-Line panels require minimal maintenance. Surface residue may be easily removed by conventional cleaning methods. For painted products, minor scratches should be touched up with a matching paint, available from the manufacturer.

## 9. TECHNICAL SERVICES

Complete technical information and literature are available at [www.atas.com](http://www.atas.com). ATAS will assist with design ideas and shop drawings.

## 10. FILING SYSTEM

- [www.atas.com](http://www.atas.com)
- Additional product information is available from the manufacturer upon request.

