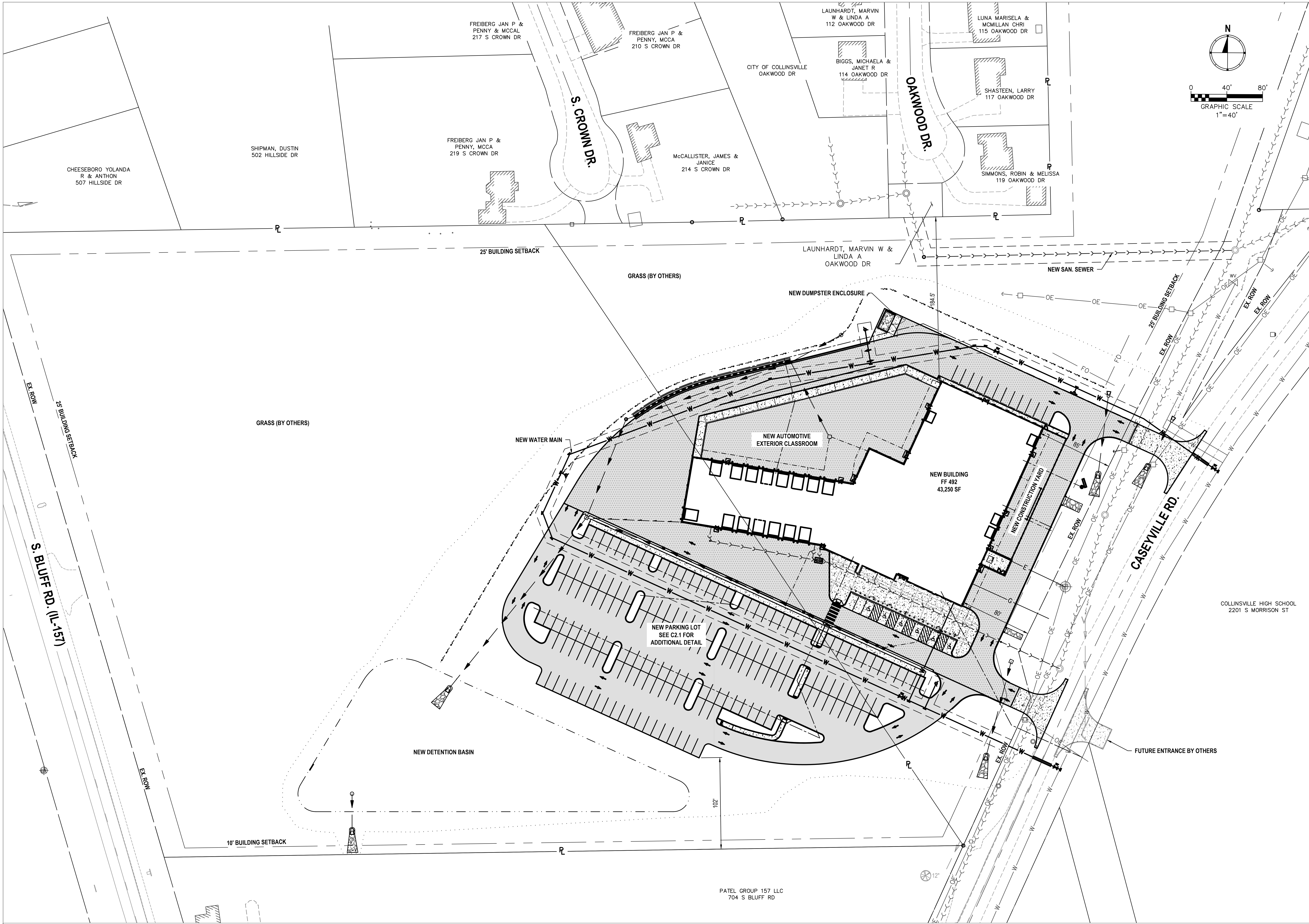
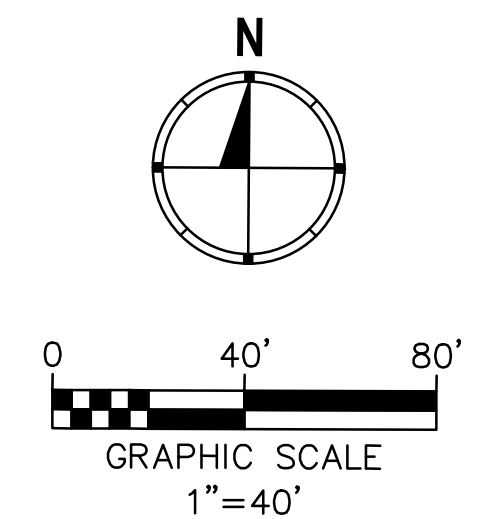


**FGM Architects Inc.**  
 475 Regency Park, Suite 325  
 O'Fallon, Illinois 62269  
 618.624.3364 OFFICE  
 618.624.3369 FAX  
 ILLINOIS PROFESSIONAL DESIGN  
 FIRM #184-000350

- CIVIL**  
**DATE ASSOCIATES, INC.**  
 205 ANDERSON COURT, SUITE 1  
 COLLINSVILLE, ILLINOIS 62234  
 618.383.0202 (O)  
 ILL STATE CERTIFICATE OF AUTHORITY  
 NO. 184-001315
- LANDSCAPE**  
**DERMODY & ASSOCIATES, LLC**  
 2384 CHARLEMAGNE DR.  
 MARKLEIGH HEIGHTS, MISSOURI 63043  
 314.205.8871 (O)
- M.E.P.**  
**BNC PARTNERSHIP, LLC**  
 521 W. MAIN ST., SUITE 200  
 BELLEVILLE, ILLINOIS 62220  
 618.277.0200 (O)  
 ILL STATE CERTIFICATE OF AUTHORITY  
 NO. 184-02445
- STRUCTURAL**  
**ASDG, LLC**  
 2001 BRUCE DRIVE  
 FAIRMONT HEIGHTS, ILLINOIS 62208  
 618.382.8887 (O)  
 ILL STATE CERTIFICATE OF AUTHORITY  
 NO. 184-003843



**NOT FOR CONSTRUCTION**

FOR REVIEW ONLY  
 Not for regulatory approval, permit or construction.

The information on this document is preliminary or incomplete, not for construction, recording purposes, or implementation.

ISSUANCE	
NO	DATE
	11/08/2024
100% CONSTRUCTION DOCUMENTS	

**LOT COVERAGE**

TOTAL PROPERTY AREA = 20.93 ACRES  
 TOTAL DISTURBED AREA = 9.71 ACRES  
 TOTAL PROPOSED IMPERVIOUS = 4.99 ACRES (23.84% TOTAL PROPOSED COVERAGE)

**NEW WORK LEGEND**

- NEW ASPHALT PAVEMENT, SEE DETAIL 6, SHEET C2.3
- NEW CONCRETE PAVEMENT, SEE DETAIL 4, SHEET C2.3  
 SIDEWALK OR RAMP, SEE DETAIL 1, SHEET 2.3
- NEW PLUS DUTY ASPHALT PAVEMENT, SEE DETAIL 8, SHEET 2.3
- NEW RETAINING WALL, SEE DETAIL 9, SHEET 2.3

**NOTE:**  
 UNDERGROUND FACILITIES, STRUCTURES AND UTILITIES HAVE BEEN PLOTTED FROM AVAILABLE SURVEYS AND RECORDS. THEIR LOCATIONS MUST BE CONSIDERED TO BE APPROXIMATE ONLY. IT IS POSSIBLE THERE MAY BE OTHERS, THE EXISTENCE OF WHICH IS NOT PRESENTLY KNOWN OR SHOWN. IT IS THE CONTRACTOR'S RESPONSIBILITY TO DETERMINE THEIR EXISTENCE AND EXACT LOCATION AND TO AVOID DAMAGE THERETO.

**CAVC NEW BUILDING**  
 COLLINSVILLE CUSD 10  
 1050 CASEYVILLE ROAD  
 COLLINSVILLE, IL, 62234

100% CONSTRUCTION DOCUMENTS

---

**OVERALL SITE PLAN**

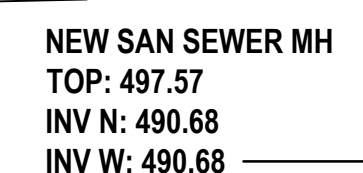
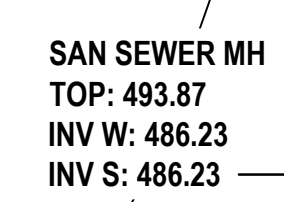
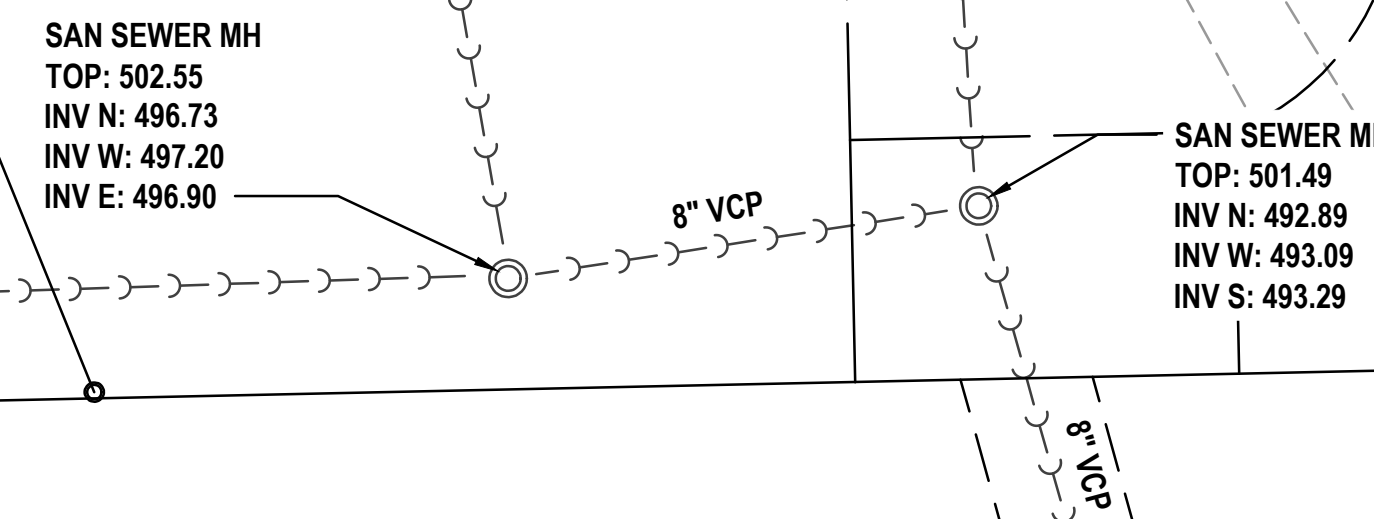
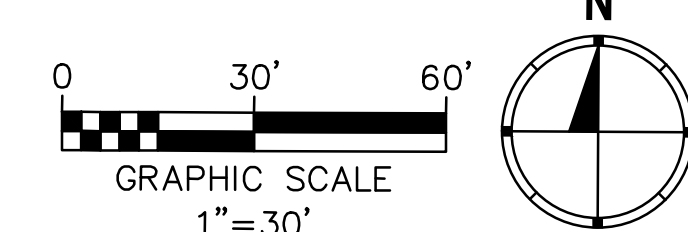
SHEET NO.  
**C2.0**

JOB NO. 22-3613.02  
 © 2024 FGM Architects Inc.

P:\0301\102003 - CAVC Building for CUSD10\DWG\102003\_02.dwg - 11/08/2024 11:45:25 AM - Copyright © 2024 FGM Architects Inc.

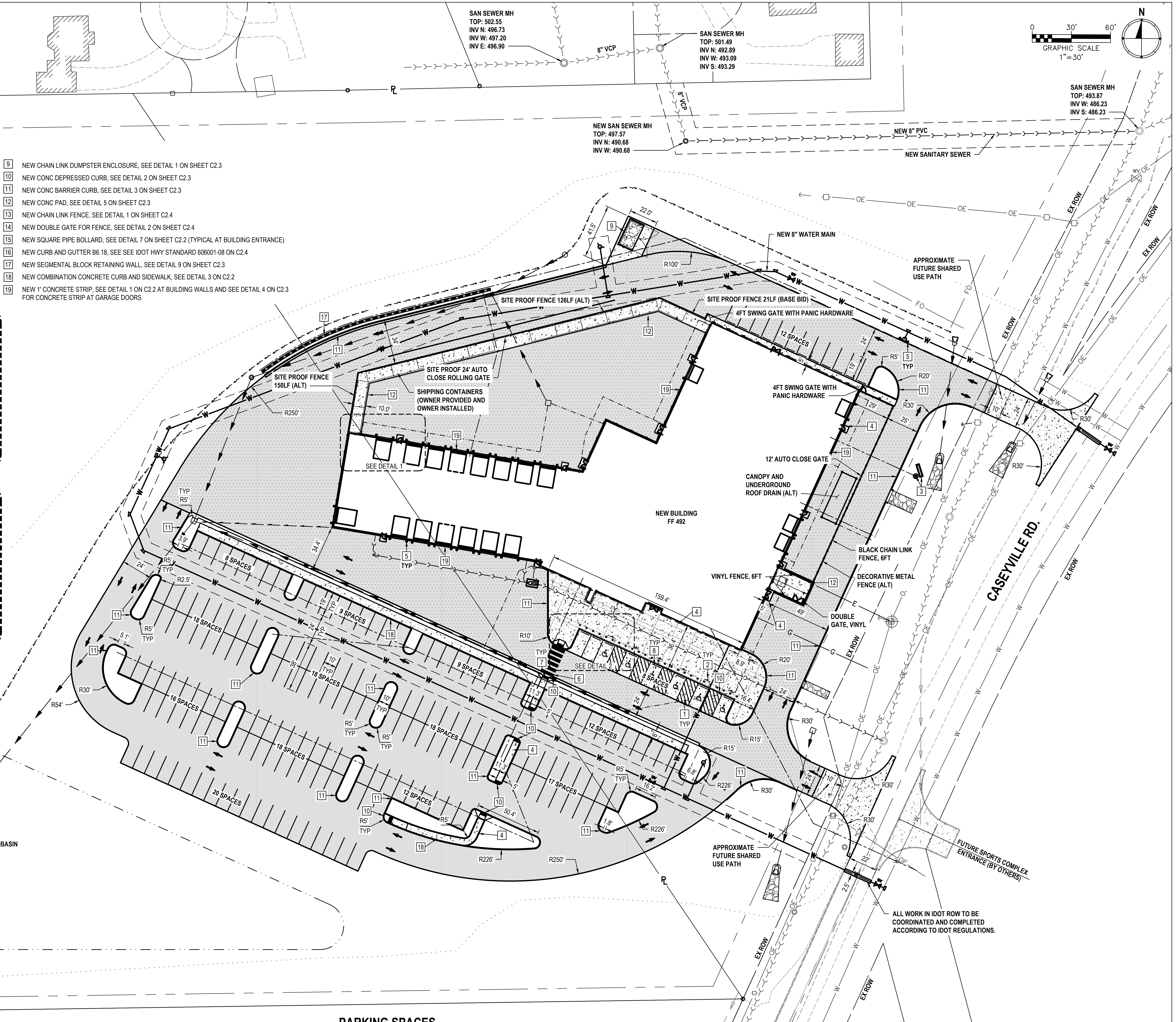
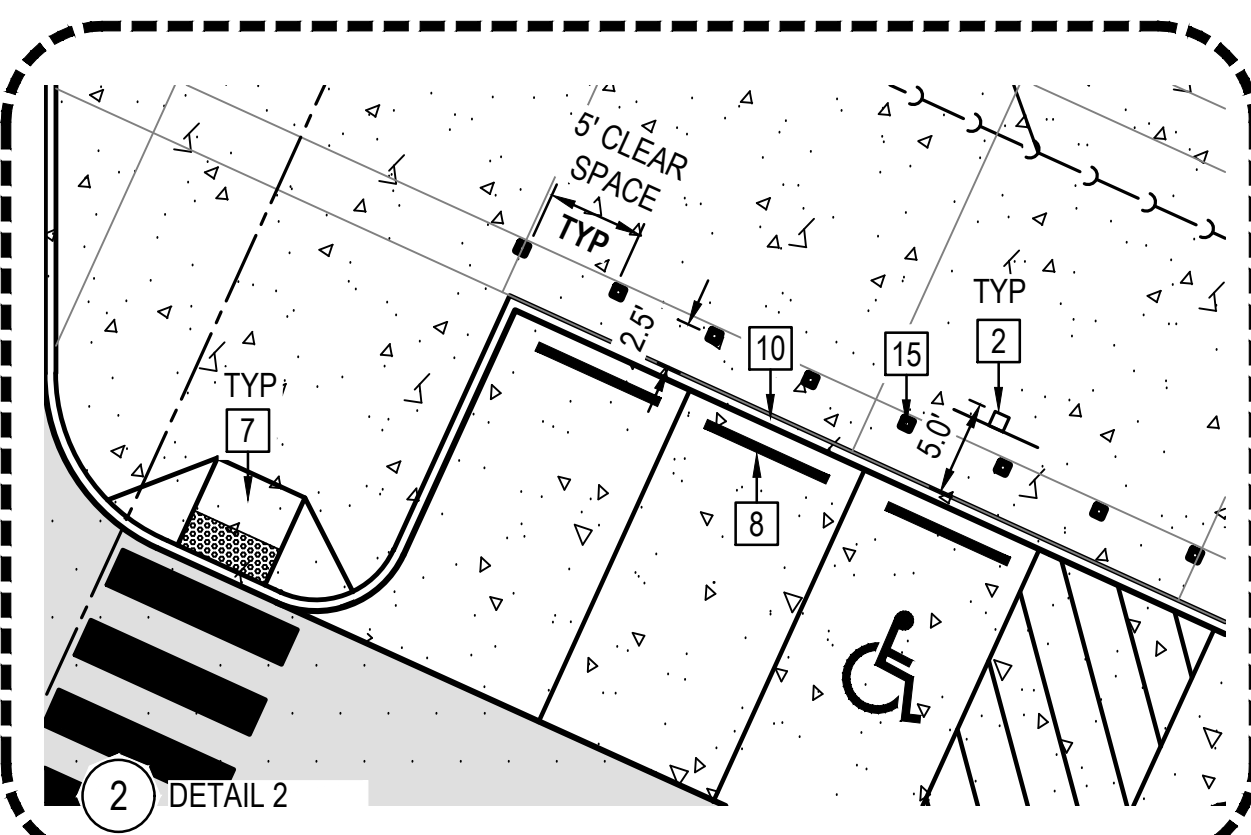
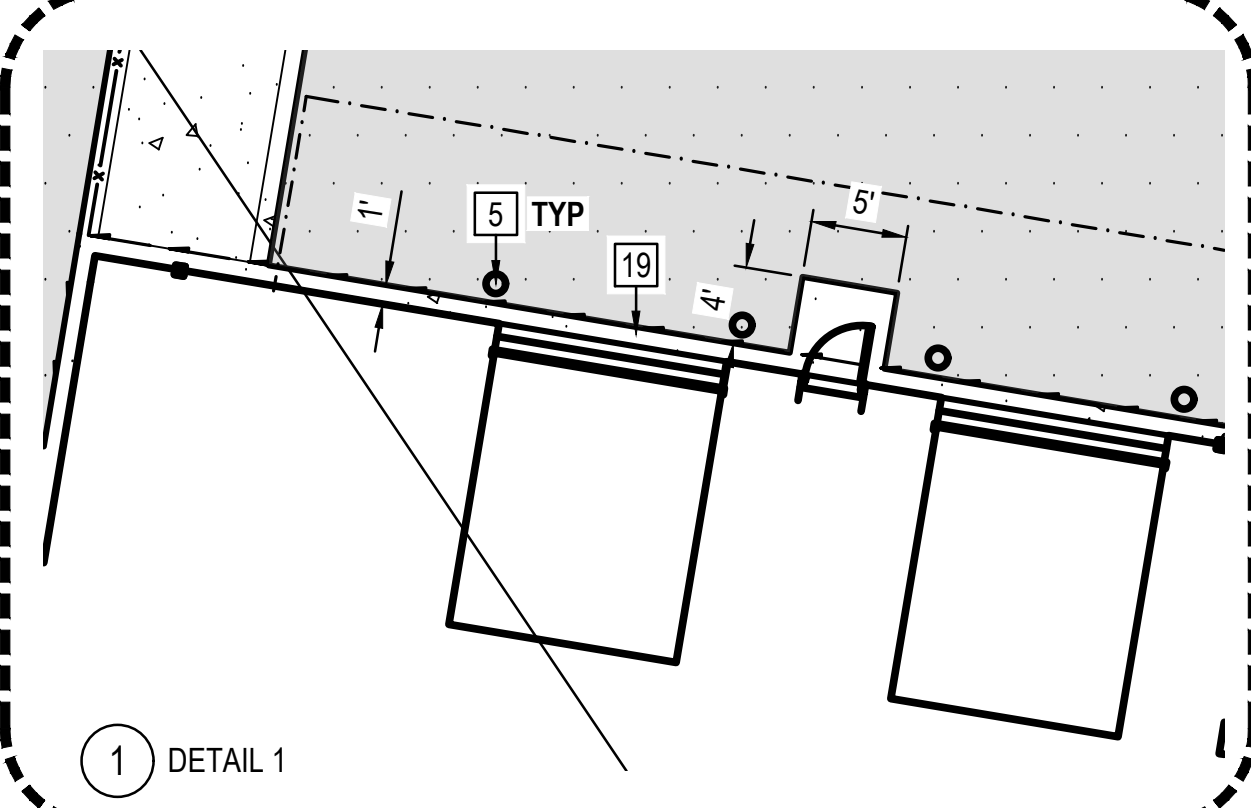
ISSUANCE table with columns: NO, DATE, DESCRIPTION. Row 1: 11/08/2024, 100% CONSTRUCTION DOCUMENTS.

CAVC NEW BUILDING
COLLINGSVILLE CUSD 10
1050 CASEYVILLE ROAD
COLLINGSVILLE, IL, 62234
100% CONSTRUCTION DOCUMENTS



KEYED NOTES

- 1 NEW ACCESSIBLE PARKING STALL, SEE DETAIL 4 ON C2.2
2 NEW ACCESSIBLE PARKING SIGN & POST, SEE DETAIL 10 ON C2.2
3 NEW MONUMENT SIGN AND FLAG POLE LOCATION, ARCHITECTURAL DETAILS
4 NEW CONCRETE SIDEWALK, SEE DETAIL 1 ON SHEET C2.2
5 NEW PIPE BOLLARD, SEE DETAIL 6 ON SHEET C2.2
6 NEW CROSSWALK, SEE DETAIL 8 ON SHEET C2.2
7 NEW DETECTIBLE WARNINGS, SEE DETAIL 9 ON SHEET C2.2
8 NEW PARKING BLOCK, SEE DETAIL 12 ON SHEET C2.2
9 NEW CHAIN LINK DUMPSTER ENCLOSURE, SEE DETAIL 1 ON SHEET C2.3
10 NEW CONC DEPRESSED CURB, SEE DETAIL 2 ON SHEET C2.3
11 NEW CONC BARRIER CURB, SEE DETAIL 3 ON SHEET C2.3
12 NEW CONC PAD, SEE DETAIL 5 ON SHEET C2.3
13 NEW CHAIN LINK FENCE, SEE DETAIL 1 ON SHEET C2.4
14 NEW DOUBLE GATE FOR FENCE, SEE DETAIL 2 ON SHEET C2.4
15 NEW SQUARE PIPE BOLLARD, SEE DETAIL 7 ON SHEET C2.2 (TYPICAL AT BUILDING ENTRANCE)
16 NEW CURB AND GUTTER B6.18, SEE SEE IDOT HWY STANDARD 606001-08 ON C2.4
17 NEW SEGMENTAL BLOCK RETAINING WALL, SEE DETAIL 9 ON SHEET C2.3
18 NEW COMBINATION CONCRETE CURB AND SIDEWALK, SEE DETAIL 3 ON C2.2
19 NEW 1' CONCRETE STRIP, SEE DETAIL 1 ON C2.2 AT BUILDING WALLS AND SEE DETAIL 4 ON C2.3 FOR CONCRETE STRIP AT GARAGE DOORS



NEW WORK LEGEND

- NEW ASPHALT PAVEMENT, SEE DETAIL 6, SHEET C2.3
NEW CONCRETE PAVEMENT, SEE DETAIL 4, SHEET C2.3
NEW PLUS DUTY ASPHALT PAVEMENT, SEE DETAIL 8, SHEET 2.3
NEW 6" ROOF DRAIN
NEW DRAIN TILE

PARKING SPACES

Table with columns: STANDARD SPACE REQUIREMENTS, STANDARD SPACES PROVIDED, ADA ACCESSIBLE SPACES PROVIDED, ELECTRIC VEHICLE PARKING PROVIDED, TOTAL PARKING SPACES PROVIDED.

NOTE:

UNDERGROUND FACILITIES, STRUCTURES AND UTILITIES HAVE BEEN PLOTTED FROM AVAILABLE SURVEYS AND RECORDS. THEIR LOCATIONS MUST BE CONSIDERED TO BE APPROXIMATE ONLY. IT IS POSSIBLE THERE MAY BE OTHERS, THE EXISTENCE OF WHICH IS NOT PRESENTLY KNOWN OR SHOWN. IT IS THE CONTRACTOR'S RESPONSIBILITY TO DETERMINE THEIR EXISTENCE AND EXACT LOCATION AND TO AVOID DAMAGE THERETO.



**CIVIL  
DATES ASSOCIATES, INC.**  
200 LAMAR COURT, SUITE 1  
COLLINSVILLE, ILLINOIS 62234  
(618) 277-2200 (O)  
ILL. STATE CERTIFICATE OF AUTHORITY  
NO. 184-001145

**LANDSCAPE  
DERMODY & ASSOCIATES, LLC**  
2394 CHARLEMAGNE DR.  
MARIETTA HEIGHTS, MISSOURI 63043  
314.205.8871 (O)

**M.E.P.  
BNC PARTNERSHIP, LLC.**  
321 W. MAIN ST., SUITE 200  
BELLEVILLE, ILLINOIS 62220  
(618) 277-2200 (O)  
ILL. STATE CERTIFICATE OF AUTHORITY  
NO. 184-004416

**STRUCTURAL  
ASDG, LLC**  
2009 W. BRICKYARDWAY  
FAIRVIEW HEIGHTS, ILLINOIS 62208  
(618) 408-5997 (O)  
ILL. STATE CERTIFICATE OF AUTHORITY  
NO. 184-005843

**NOT FOR  
CONSTRUCTION**

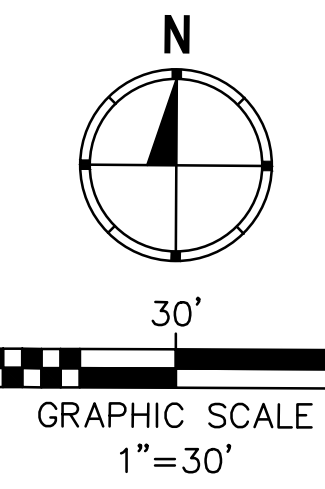
FOR REVIEW ONLY  
Not for regulatory approval, permit or  
construction.  
The information on this document is  
preliminary or incomplete, not for  
construction, recording purposes, or  
implementation.

NO	DATE	ISSUANCE DESCRIPTION
	11/08/2024	100% CONSTRUCTION DOCUMENTS

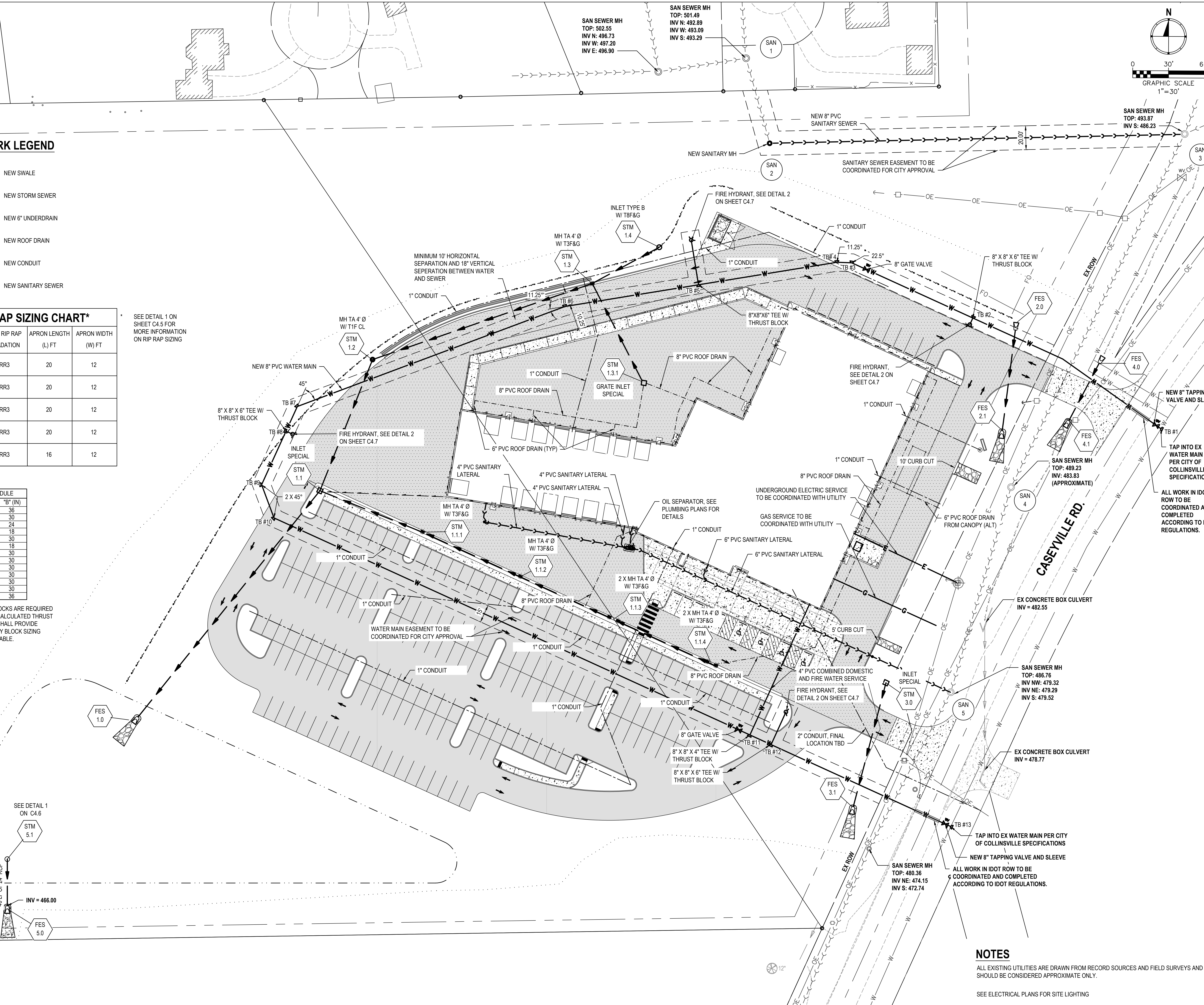
**CAVC NEW BUILDING**  
COLLINSVILLE CUSD 10  
1050 CASEVILLE ROAD  
COLLINSVILLE, IL, 62234  
**100% CONSTRUCTION DOCUMENTS**

**DRAINAGE AND  
UTILITY PLAN**

SHEET NO.  
**C4.0**



SAN SEWER MH  
TOP: 501.49  
INV N: 492.89  
INV W: 493.09  
INV E: 493.29



**NEW WORK LEGEND**

- NEW SWALE
- NEW STORM SEWER
- NEW 6" UNDERDRAIN
- NEW ROOF DRAIN
- NEW CONDUIT
- NEW SANITARY SEWER

**RIP RAP SIZING CHART\***

OUTLET STRUCTURE	IDOT RIP RAP GRADATION	APRON LENGTH (L) FT	APRON WIDTH (W) FT
FES 1.0	RR3	20	12
FES 2.1	RR3	20	12
FES 3.1	RR3	20	12
FES 4.1	RR3	20	12
FES 5.0	RR3	16	12

SEE DETAIL 1 ON  
SHEET C4.5 FOR  
MORE INFORMATION  
ON RIP RAP SIZING

**THRUST BLOCK SCHEDULE**

TB#	"A" (IN)	"B" (IN)
1	61	36
2	41	30
3	36	24
4	24	18
5	41	30
6	24	18
7	56	30
8	41	30
9	56	30
10	56	30
11	41	30
12	41	30
13	61	36

PER NFPA 24 THRUST BLOCKS ARE REQUIRED  
TO BE SIZED BASED ON CALCULATED THRUST  
FORCES. CONTRACTOR SHALL PROVIDE  
CALCULATIONS TO VERIFY BLOCK SIZING  
WHEN NFPA 24 IS APPLICABLE.

**NOTES**

ALL EXISTING UTILITIES ARE DRAWN FROM RECORD SOURCES AND FIELD SURVEYS AND  
SHOULD BE CONSIDERED APPROXIMATE ONLY.  
SEE ELECTRICAL PLANS FOR SITE LIGHTING

## NOT FOR CONSTRUCTION

FOR REVIEW ONLY  
Not for regulatory approval, permit or construction.  
The information on this document is preliminary or incomplete, not for construction, recording purposes, or implementation.

ISSUANCE	
NO	DATE

**COLLINSVILLE AREA VOCATIONAL CENTER NEW BUILDING**  
BOARD OF EDUCATION COLLINSVILLE CUSD 10  
COLLINSVILLE, IL, 62234  
50% CONSTRUCTION DOCUMENTS

Site Area and Landscape Diagram  
(for Planning and Zoning only)

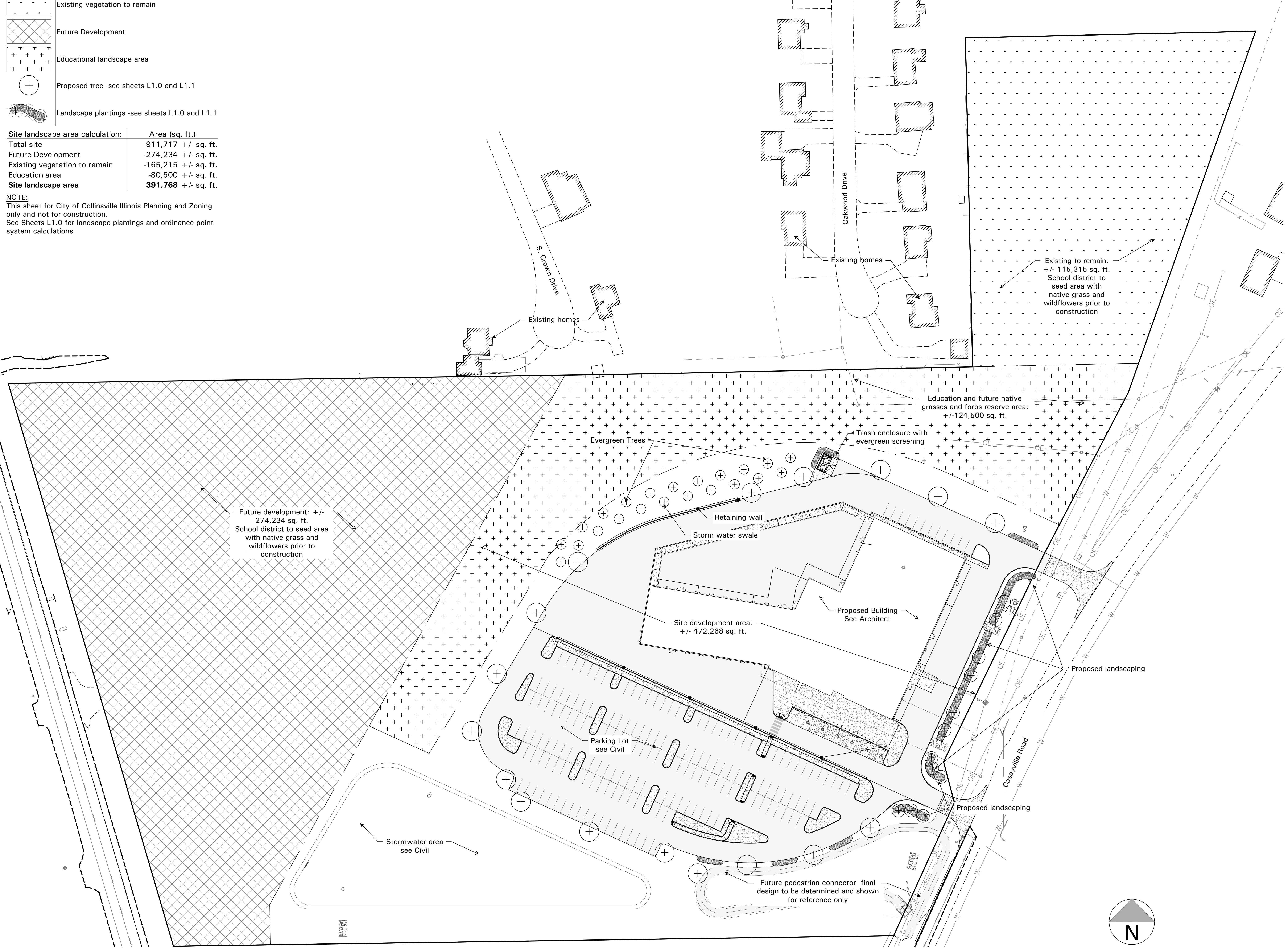
SHEET NO. L0.0

**LEGEND:**

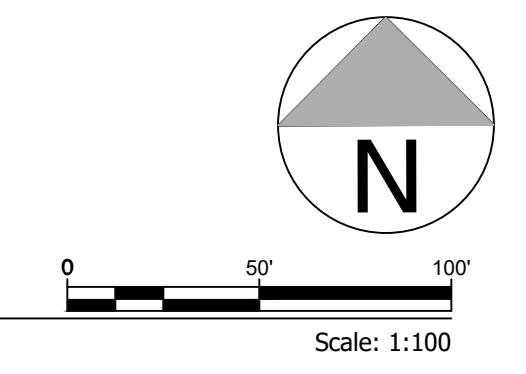
Symbol	Description
	Proposed walk and plaza area
	Proposed parking and paved area -see Civil
	Existing vegetation to remain
	Future Development
	Educational landscape area
	Proposed tree -see sheets L1.0 and L1.1
	Landscape plantings -see sheets L1.0 and L1.1

Site landscape area calculation:	Area (sq. ft.)
Total site	911,717 +/- sq. ft.
Future Development	-274,234 +/- sq. ft.
Existing vegetation to remain	-165,215 +/- sq. ft.
Education area	-80,500 +/- sq. ft.
<b>Site landscape area</b>	<b>391,768 +/- sq. ft.</b>

**NOTE:**  
This sheet for City of Collinsville Illinois Planning and Zoning only and not for construction.  
See Sheets L1.0 for landscape plantings and ordinance point system calculations



1 Landscape Use Diagram for Planning and Zoning







**NOT FOR  
CONSTRUCTION**

**ISSUANCE**

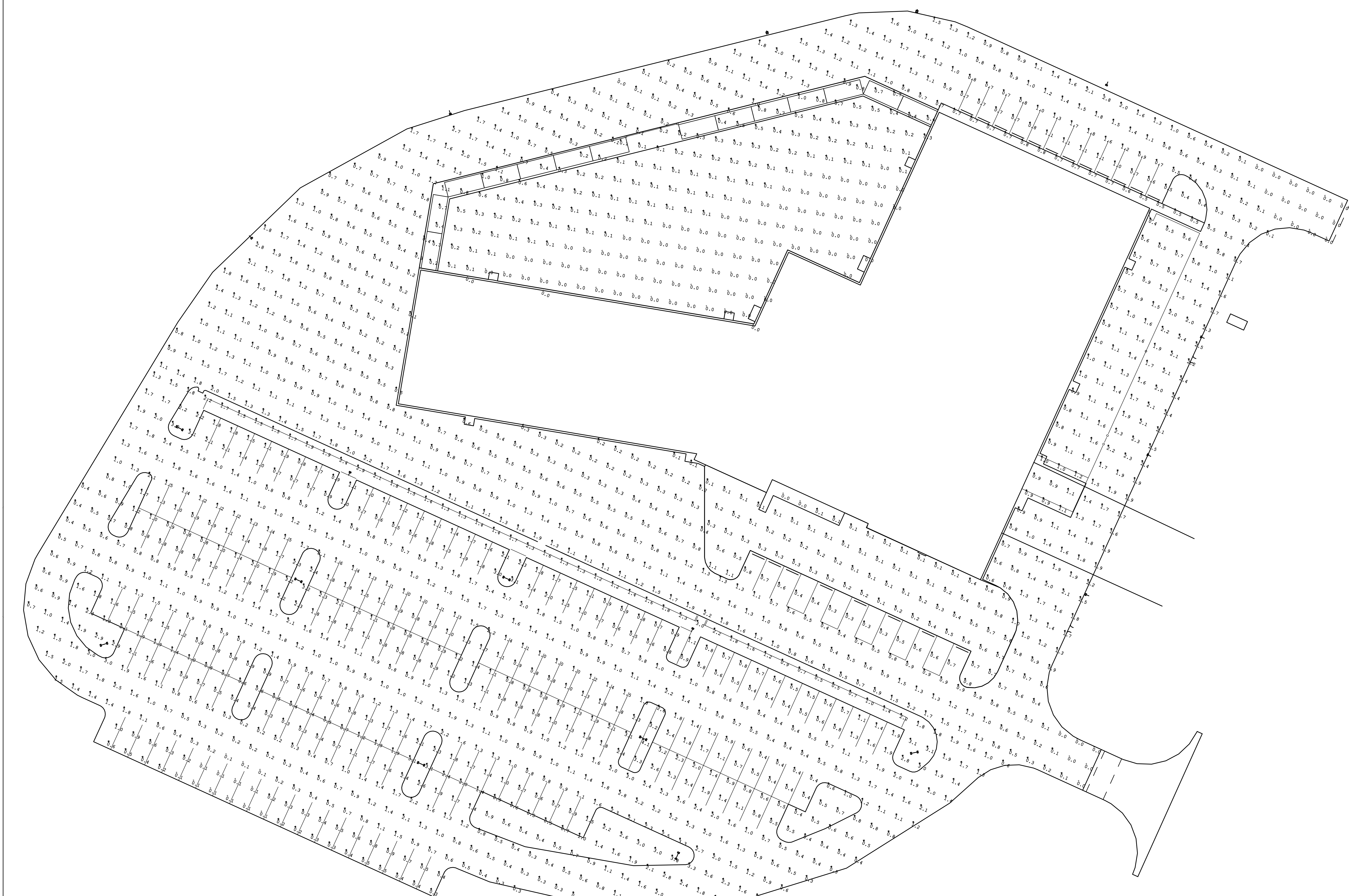
NO.	DATE	DESCRIPTION

**CAVC NEW BUILDING**  
COLLINGSVILLE CUSD 10  
COLLINGSVILLE, IL, 62234

100% CONSTRUCTION DOCUMENTS

**ELECTRICAL SITE PLAN**

SHEET NO.  
**E1.1**



**1 | PHOTOMETRIC SITE PLAN**  
1" = 20'-0"