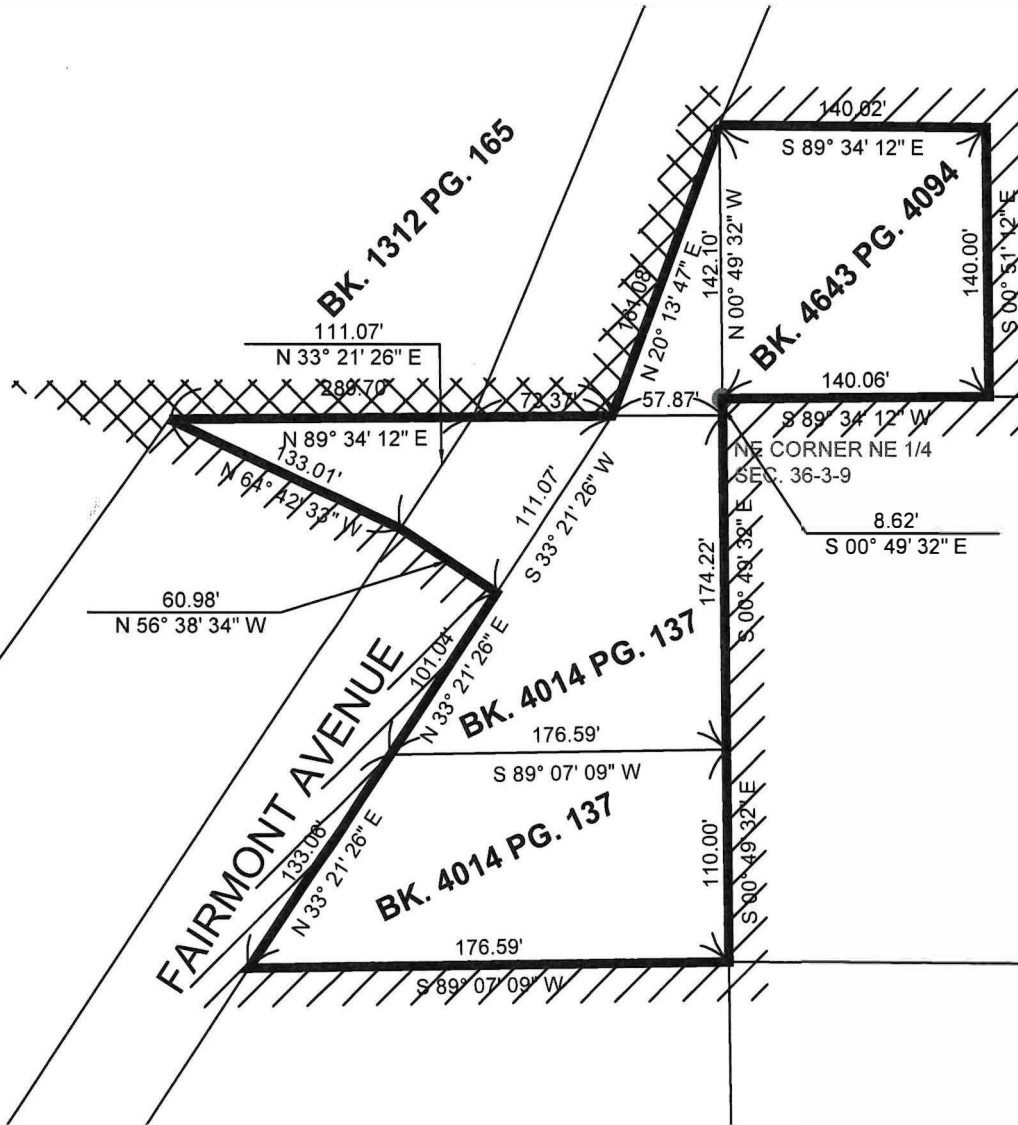
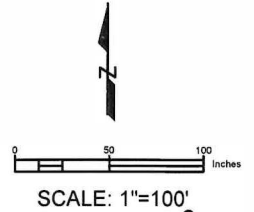


ANNEXATION PLAT

FOR A TRACT OF LAND IN THE NORTHEAST QUARTER OF
SECTION 36, TOWNSHIP 3 NORTH, RANGE 9 WEST OF THE 3rd
PRINCIPAL MERIDIAN, MADISON COUNTY, ILLINOIS



WE, THE CITY OF COLLINSVILLE HAVE
PREPARED THIS PLAT FOR
ANNEXATION PURPOSES.

KEVIN MADDEN PE 062.071784

APRIL, 4 2025

LIC. EXPIRATION DATE: NOVEMBER 30, 2025

LEGEND

- EXISTING CORPORATE LIMITS LINE
- PONTON BEACH CORPORATE LIMITS LINE



SHEET TITLE:

EXHIBIT B - ANNEXATION PLAT

