


# ANNEXATION PLAT

FOR A TRACT OF LAND IN THE NORTHWEST QUARTER OF SECTION 20, TOWNSHIP 3, RANGE 8 WEST OF THE 3rd PRINCIPAL MERIDIAN, MADISON COUNTY, ILLINOIS

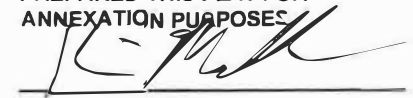
## LEGEND

 EXISTING CORPORATE LIMITS LINE



SCALE: 1"=300'

WE, THE CITY OF COLLINSVILLE HAVE PREPARED THIS PLAT FOR ANNEXATION PURPOSES



KEVIN MADDEN PE 062.068532  
MARCH 10, 2025  
LIC. EXPIRATION DATE: 11/30/2025

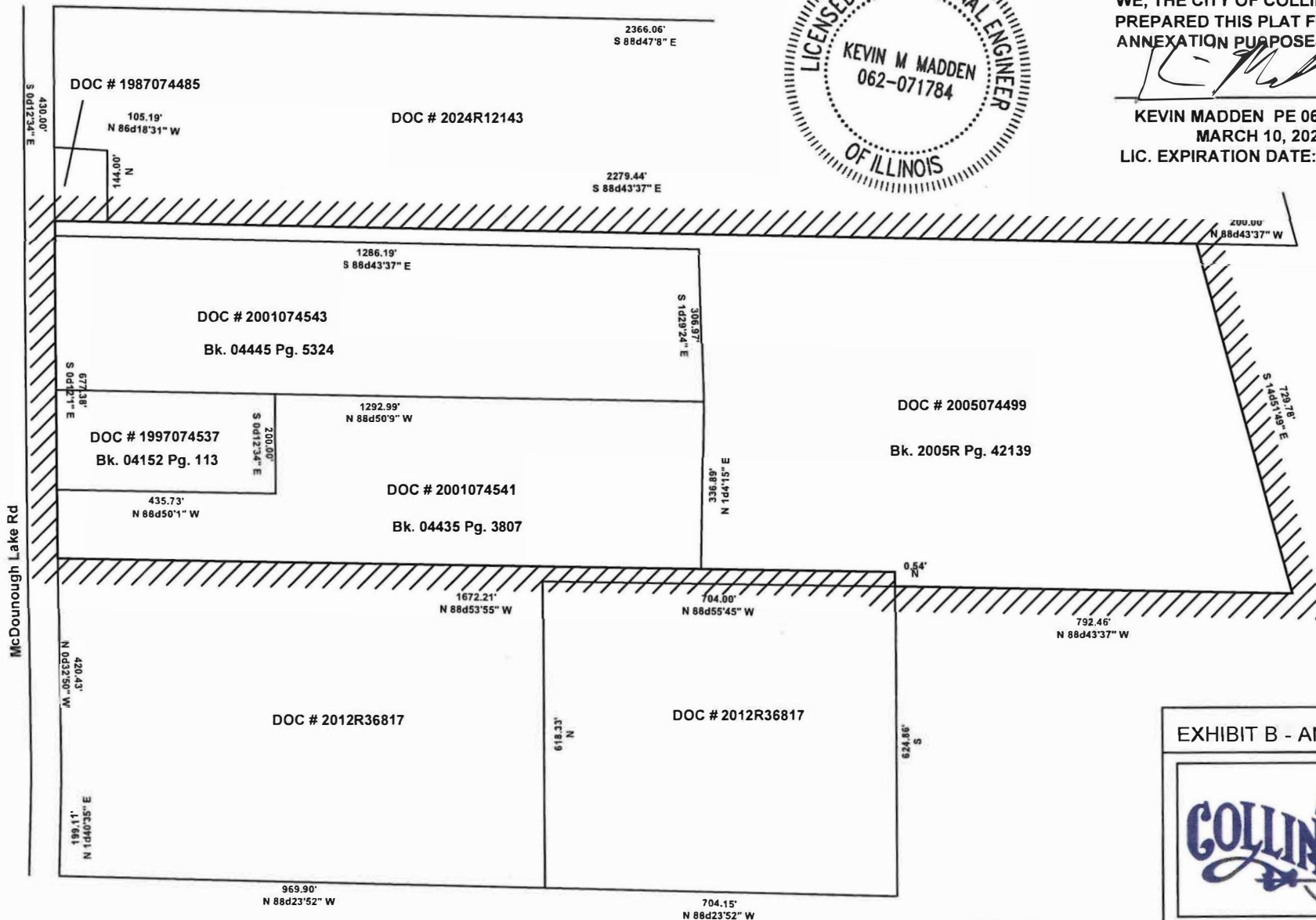


EXHIBIT B - ANNEXATION PLAT

