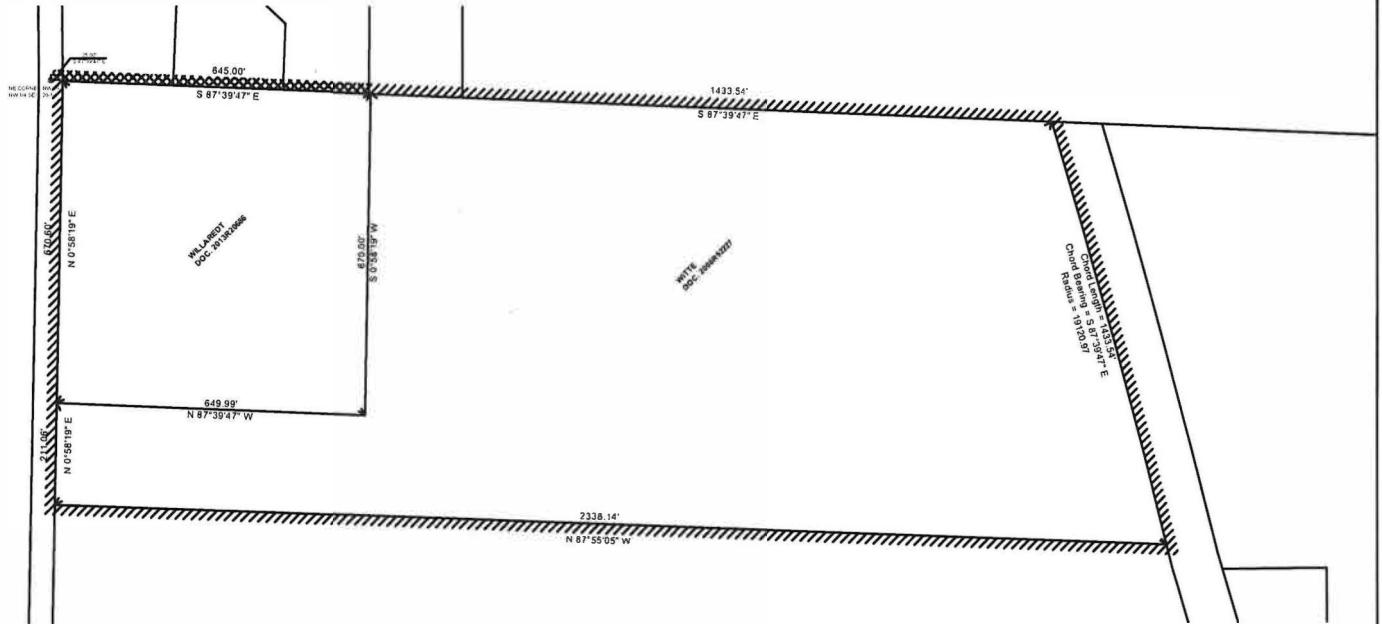
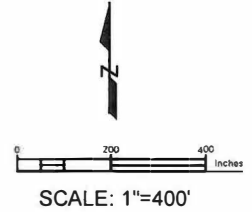


ANNEXATION PLAT

FOR A TRACT OF LAND IN THE NORTH HALF OF SECTION 20,
TOWNSHIP 3 NORTH, RANGE 8 WEST OF THE 3rd
PRINCIPAL MERIDIAN, MADISON COUNTY, ILLINOIS



LEGEND

- EXISTING CORPORATE LIMITS LINE
- PONTOON BEACH CORPORATE LIMITS LINE

WE, THE CITY OF COLLINSVILLE HAVE
PREPARED THIS PLAT FOR
ANNEXATION PURPOSES

KEVIN MADDEN PE 062.071784
APRIL 4, 2025

LIC. EXPIRATION DATE: NOVEMBER 30, 2025



SHEET TITLE:

EXHIBIT B - ANNEXATION PLAT

