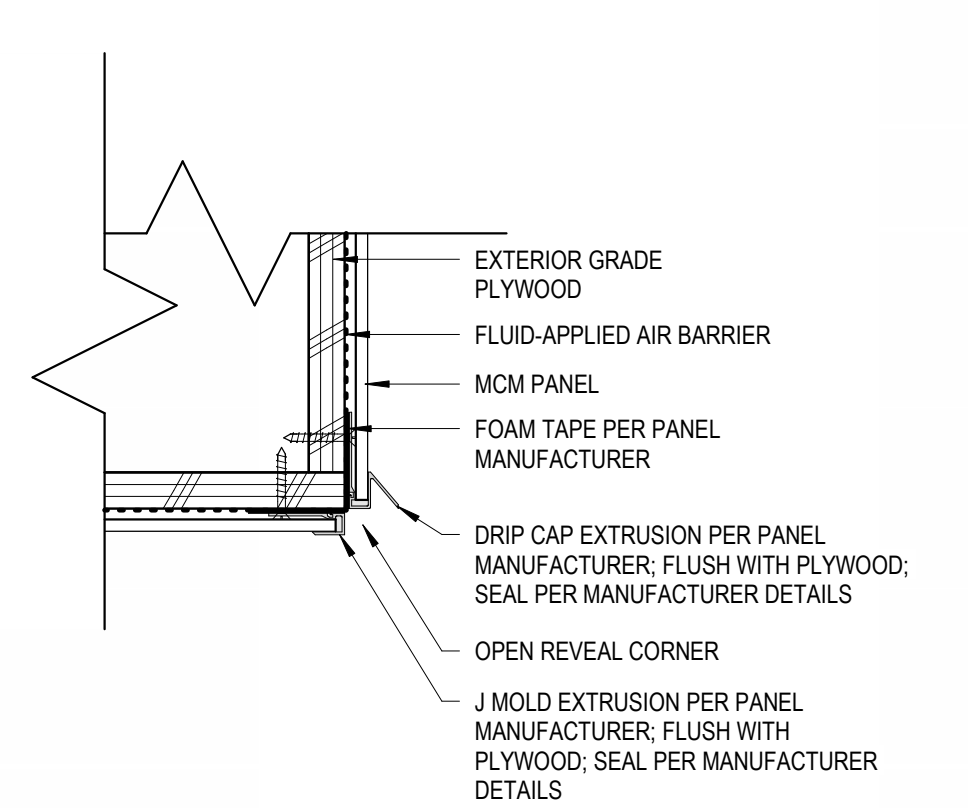
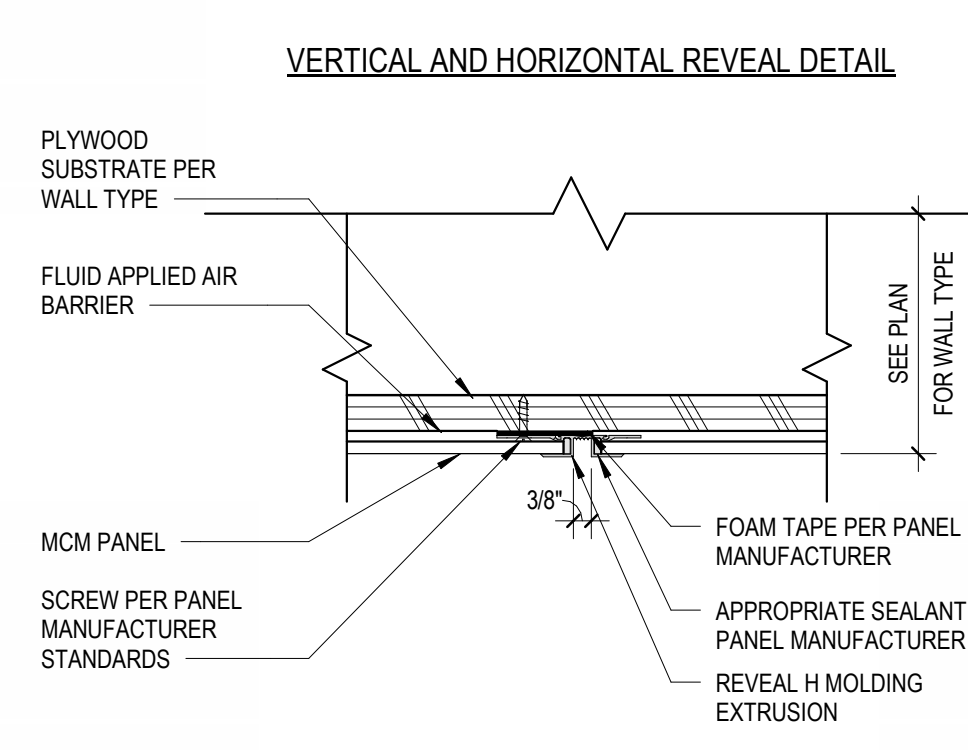


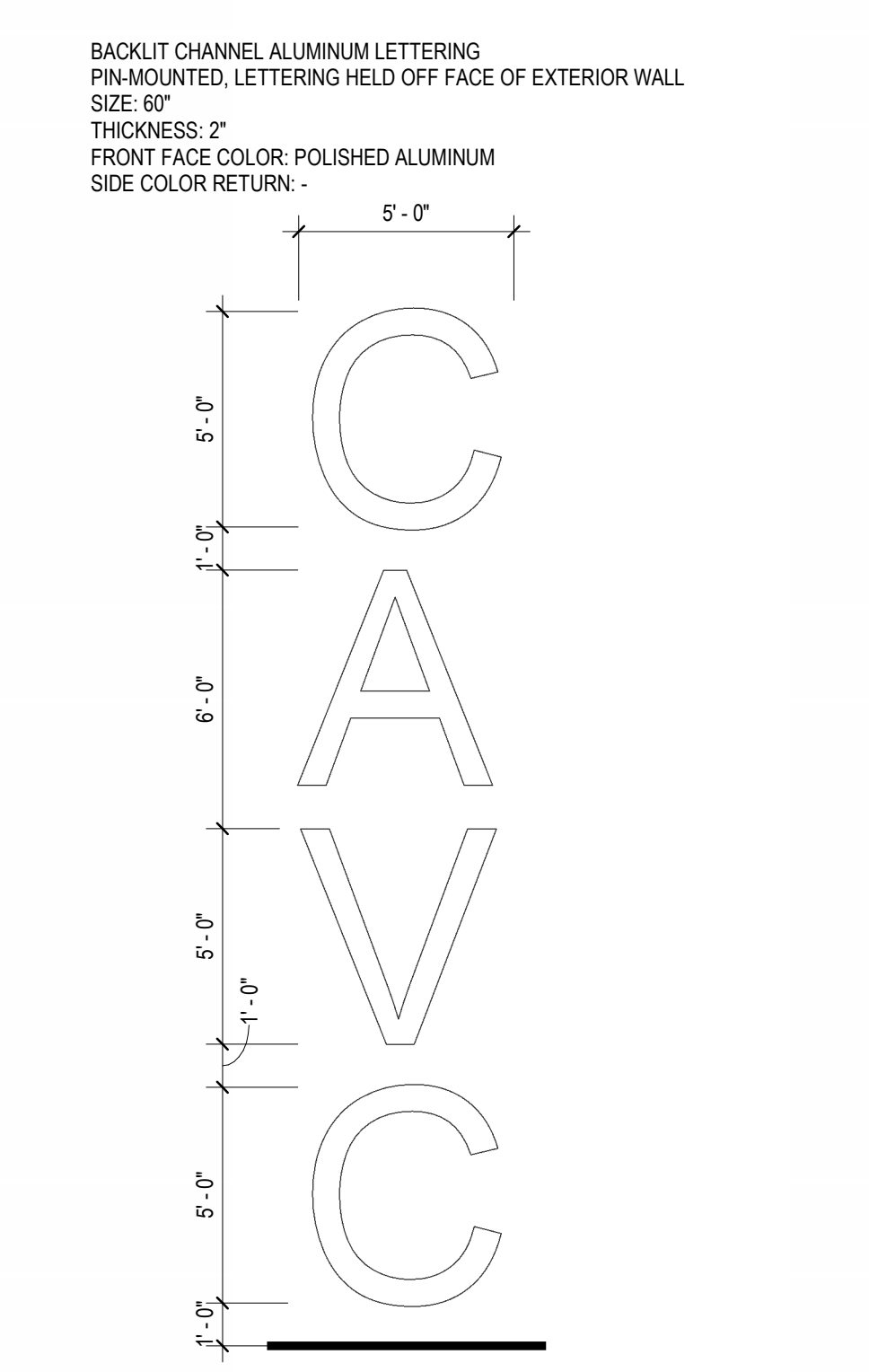
10/19/2024 10:48:39  
I:\Autodesk Docs\Collinsville\CollinsvilleCUSD10\_CAVC\_New\_Bldg\_2022\_DD.rvt  
Copyright 2024 FGM ARCHITECTS INC.



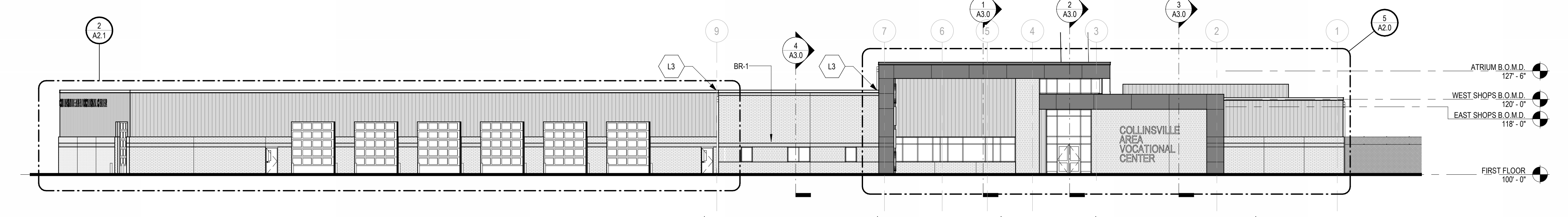
**12 | MCM OPEN CORNER DETAIL**  
3" = 1'-0"



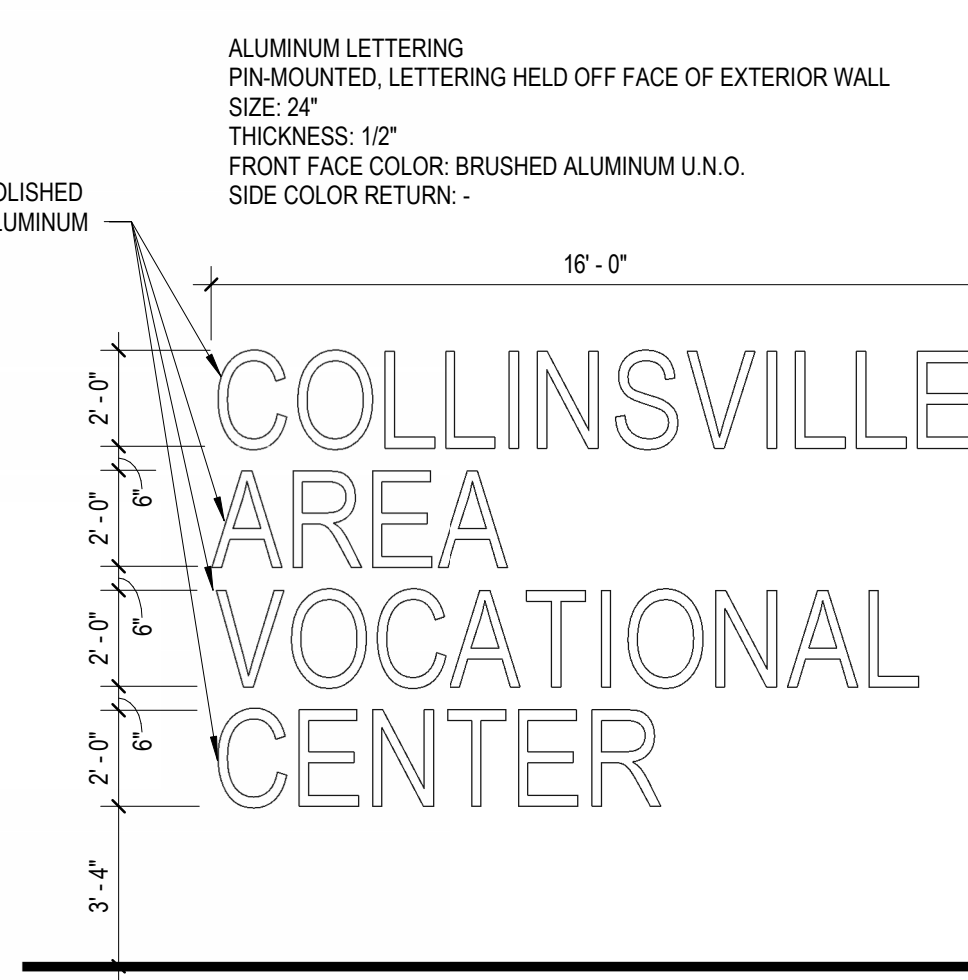
**11 | MCM REVEAL EXTRUSION DETAIL**  
3" = 1'-0"



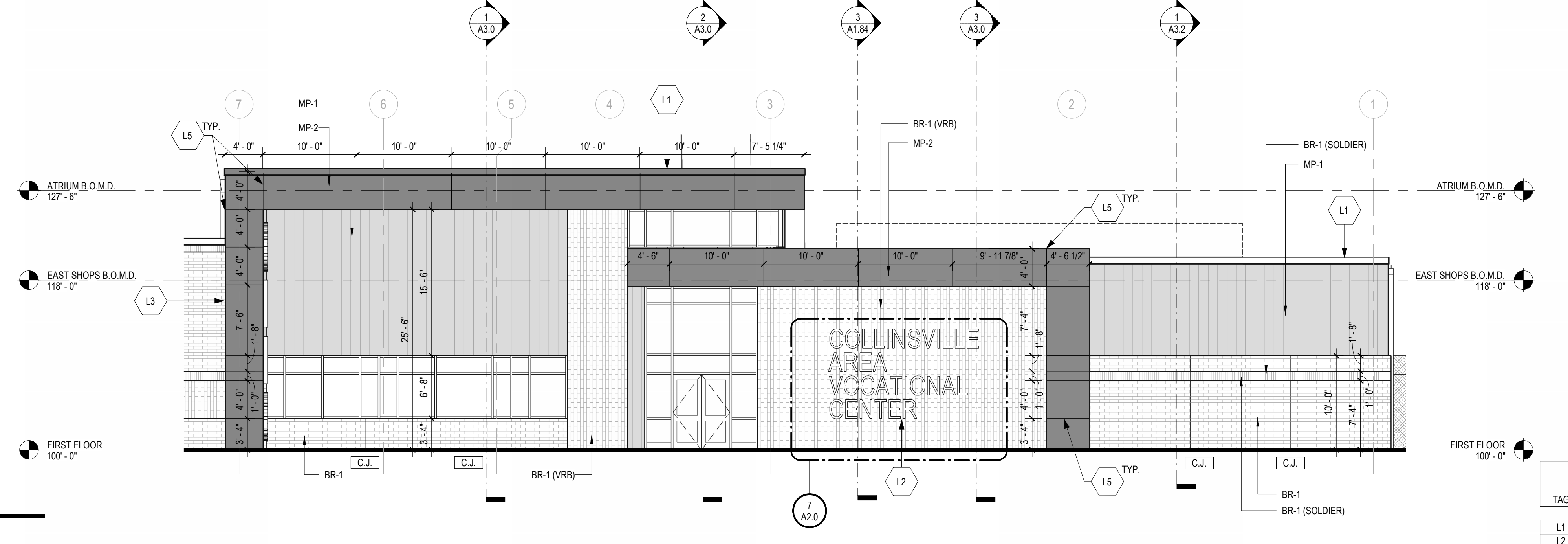
**9 | EXTERIOR SIGNAGE**  
1/4" = 1'-0"



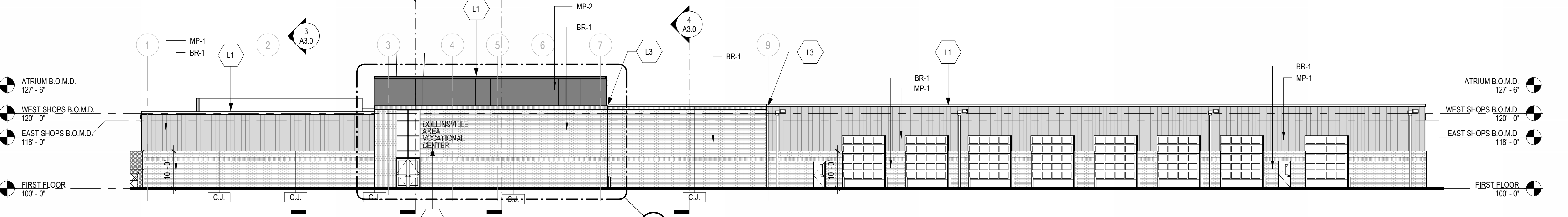
**2 | SOUTH ELEVATION**  
1/16" = 1'-0"



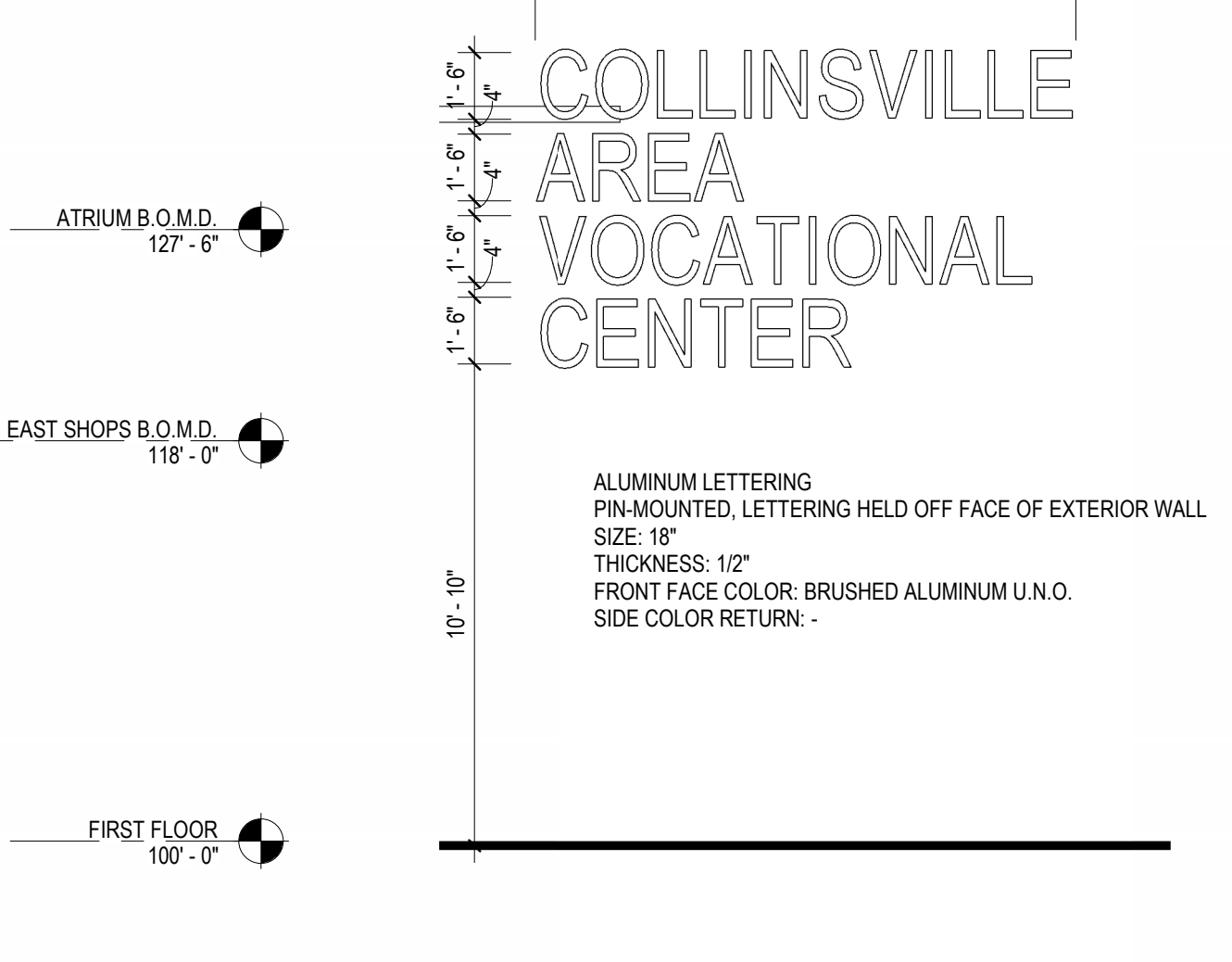
**7 | EXTERIOR SIGNAGE**  
1/4" = 1'-0"



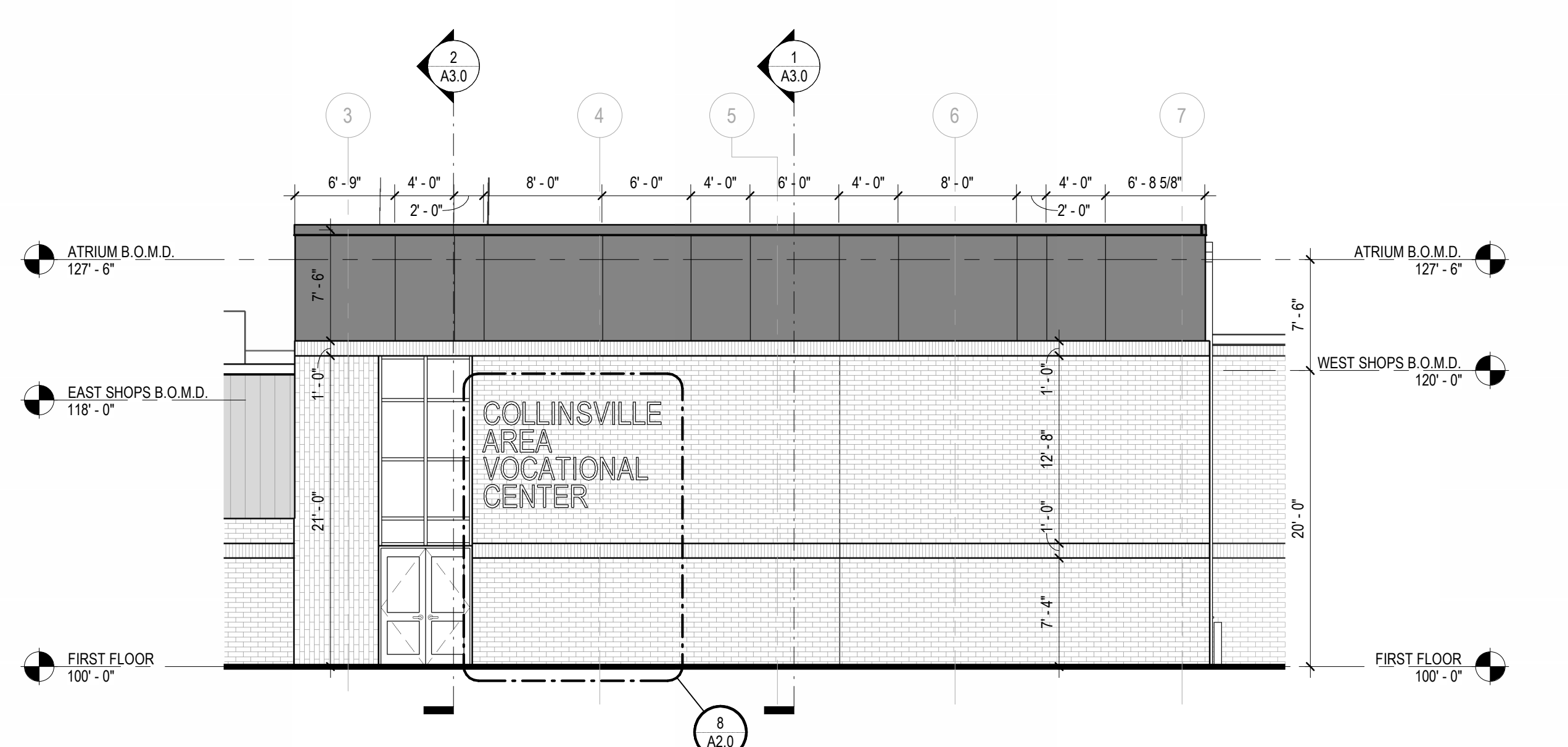
**5 | ENLARGED SOUTH ELEVATION**  
1/8" = 1'-0"



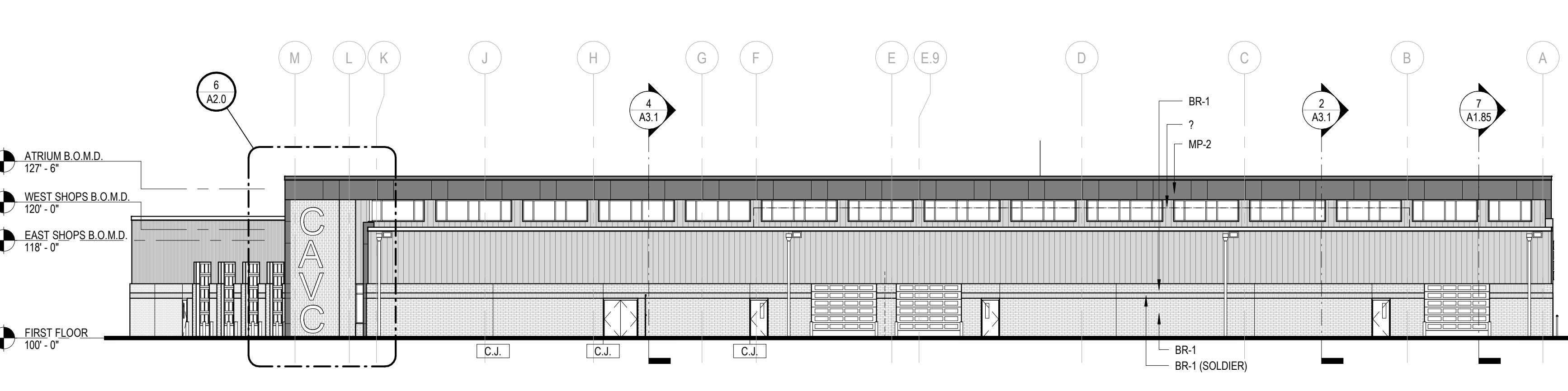
**1 | NORTH ELEVATION**  
1/16" = 1'-0"



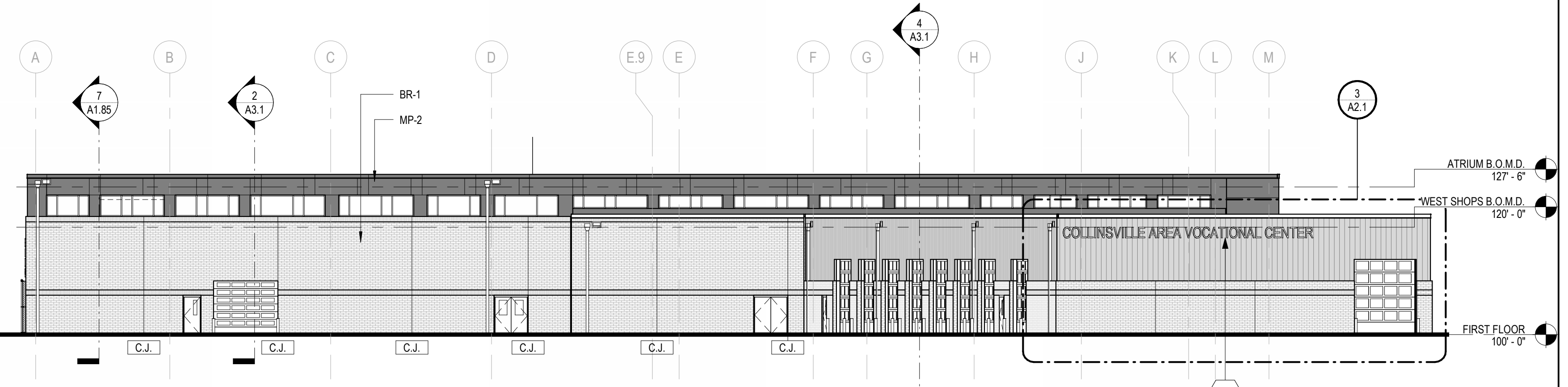
**6 | ENLARGED EAST ELEVATION**  
1/8" = 1'-0"



**10 | ENLARGED NORTH ELEVATION**  
1/8" = 1'-0"



**3 | EAST ELEVATION**  
1/16" = 1'-0"



**4 | WEST ELEVATION**  
1/16" = 1'-0"

- EXTERIOR MATERIALS LEGEND**
- MASONRY VENEER BRICK (DESIGN BASIS)**  
BR-1 FACE BRICK  
MFR: ENDICOTT CLAY PRODUCTS CO.  
SIZE: UTILITY  
COLOR: DARK IRONSPOT SMOOTH  
AS BLDG. BRICK VENEER AS INDICATED
- FORMED METAL WALL PANEL (DESIGN BASIS)**  
MP-1 METAL PANEL TO BE:  
MFR: ATAS INTERNATIONAL, INC.  
STYLE: BOXED RIB PROFILE (TBO)  
COLOR: THUNDER GREY  
SIZES: SEE EXTERIOR ELEVATIONS  
TEXTURE: N/A
- MP-2 METAL PANEL TO BE:  
MFR: ATAS INTERNATIONAL, INC.  
STYLE: STERACORE FLUSH PANEL  
COLOR: MATTE BLACK  
SIZES: SEE EXTERIOR ELEVATIONS  
TEXTURE: N/A
- MP-3 METAL PANEL TO BE:  
MFR: KNOTWOOD ARCHITECTURAL SYSTEMS  
STYLE: STERACORE FLUSH PANEL  
COLOR: BUSH CHERRY  
SIZES: SEE REFLECTED CEILING PLAN FOR SOFFIT PANEL LAYOUT  
TEXTURE: N/A
- STOREFRONT**  
SF-1 STOREFRONT BASIS OF DESIGN TO BE:  
MFR: ???  
STYLE: MULTIPLANE CENTER SET  
COLOR: BLACK  
SIZES: SEE AS 2 FOR GLAZING TYPES  
REFER TO AS SERIES WINDOW TYPES SHEET FOR MORE INFO
- CW-1 CURTAINWALL BASIS OF DESIGN TO BE:  
MFR: ???  
STYLE: ???  
COLOR: BLACK  
SIZES: SEE AS 2 FOR GLAZING TYPES  
REFER TO AS SERIES WINDOW TYPES SHEET FOR MORE INFO
- ROOF FASCIA**  
FA-1/FA-2 FASCIA ROOF EDGE TO BE:  
MFR: ???  
STYLE: ???  
SIZE: #8" FACE HEIGHT  
FA-1 COLOR: MATTE BLACK

**EXTERIOR ELEVATIONS KEYED NOTES**

TAG	DESCRIPTION
L1	PRE-FINISHED METAL COPING
L2	PIN-MOUNTED STAND OFF, EXTERIOR GRADE DIMENSIONAL ALUMINUM LETTERING. 1/2" THICK, FONT TBO. SEE ELEVATIONS FOR DIMENSIONS.
L3	BUILDING EXPANSION JOINT
L4	PIN-MOUNTED STAND OFF, BACKLIT, EXTERIOR GRADE DIMENSIONAL ALUMINUM LETTERING. 2" THICK, FONT TBO. SEE ELEVATIONS FOR DIMENSIONS.
L5	MCM REVEAL H MOLDING EXTRUSION. SEE DTL. 1/1A2.0 FOR ADDITIONAL INFORMATION.

**fgma**  
FGMARCHITECTS

**FGM Architects Inc.**  
475 Regency Park, Suite 325  
O'Fallon, Illinois 62269

618.624.3364 OFFICE  
618.624.3369 FAX

ILLINOIS PROFESSIONAL DESIGN  
FIRM #184-000350

**CIVIL**  
**OATES ASSOCIATES, INC.**  
205 LINCOLN DRIVE, SUITE 1  
COLLINSVILLE, IL 62234  
(618) 363-0200  
ILL. STATE CERTIFICATE OF AUTHORITY  
NO. 184-001155

**STRUCTURAL**  
**ASDG, LLC.**  
3009 LINCOLN HIGHWAY  
PARKVIEW HEIGHTS, IL 62208  
(618) 628-2887 (O)  
ILL. STATE CERTIFICATE OF AUTHORITY  
NO. 184-001843

**MFP**  
**RTM ENGINEERING CONSULTANTS**  
1001 W. WASHINGTON STREET, SUITE 100  
BELLEVILLE, IL 62220  
(618) 277-3200 (O)  
ILL. STATE CERTIFICATE OF AUTHORITY  
NO. 184-00177-2002

**LANDSCAPE**  
**DERMODY & ASSOCIATES, LLC**  
238 COMMERCE BLVD.  
MARIETTA HEIGHTS, MO, 63043  
(314) 205-8871 (O)  
ILL. STATE CERTIFICATE OF AUTHORITY  
NO. 157-001275

**NOT FOR CONSTRUCTION**

FOR REVIEW ONLY  
Not for regulatory approval, permit or construction.

The information on this document is preliminary or incomplete, not for construction, recording purposes, or implementation.

**ISSUANCE**

NO.	DATE	DESCRIPTION

**COLLINSVILLE AREA VOCATIONAL CENTER NEW BUILDING**  
BOARD OF EDUCATION COLLINSVILLE CUSD 10  
COLLINSVILLE, IL, 62234

50% CONSTRUCTION DOCUMENTS

EXTERIOR ELEVATIONS

SHEET NO.  
**A2.0**

JOB NO. 22-3613.02  
© 2024 FGM Architects Inc.

**NOT FOR CONSTRUCTION**

FOR REVIEW ONLY

Not for regulatory approval, permit or construction.

The information on this document is preliminary or incomplete, not for construction, recording purposes, or implementation.

ISSUANCE

NO	DATE	DESCRIPTION

**COLLINSVILLE AREA VOCATIONAL CENTER NEW BUILDING**  
BOARD OF EDUCATION COLLINSVILLE CUSD 10  
COLLINSVILLE, IL, 62234

50% CONSTRUCTION DOCUMENTS

EXTERIOR ELEVATIONS

SHEET NO.

**A2.1**

**EXTERIOR MATERIALS LEGEND**

**MASONRY VENEER BRICK (DESIGN BASIS)**  
BR-1 FACE BRICK  
MFR: ENDICOTT CLAY PRODUCTS CO.  
SIZE: UTILITY  
(3 SSW x 3.58TH x 11.58L)  
COLOR: DARK IRONSPOT SMOOTH  
USE: AS BLDG. BRICK VENEER AS INDICATED

**FORMED METAL WALL PANEL (DESIGN BASIS)**  
MP-1 METAL PANEL TO BE:  
MFR: ATAS INTERNATIONAL, INC.  
STYLE: BOXED RIS PROFILE (TSD)  
COLOR: THUNDER GREY  
SIZES: SEE EXTERIOR ELEVATIONS  
TEXTURE: N/A

MP-2 METAL PANEL TO BE:  
MFR: ATAS INTERNATIONAL, INC.  
STYLE: STERRACORE FLUSH PLANEL  
COLOR: MATTE BLACK  
SIZES: SEE EXTERIOR ELEVATIONS  
TEXTURE: N/A

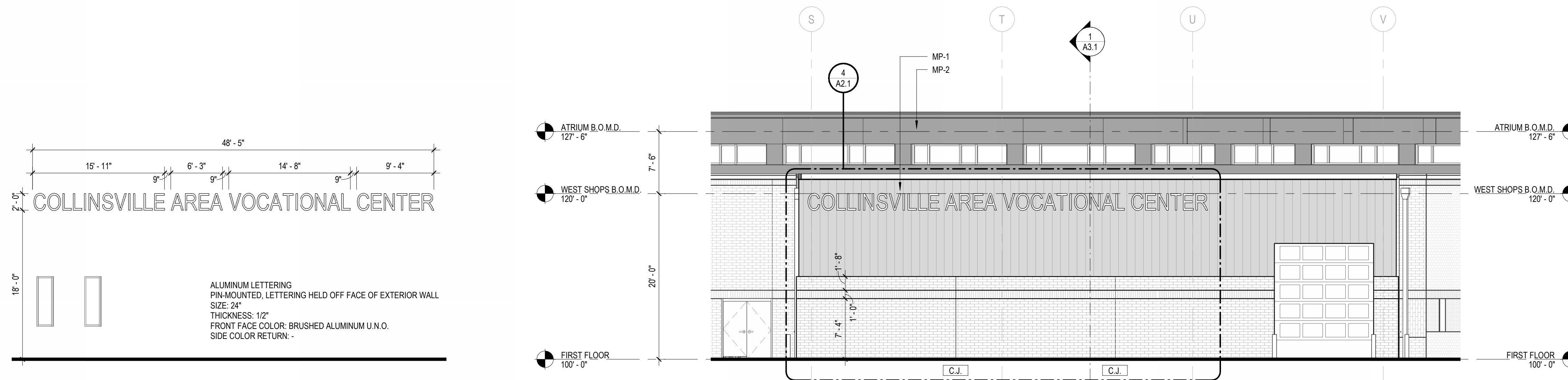
MP-3 METAL PANEL TO BE:  
MFR: KNOTWOOD ARCHITECTURAL SYSTEMS  
COLOR: BUSH CHERRY  
SIZES: SEE REFLECTED CEILING PLAN FOR SOFFIT PANEL LAYOUT  
TEXTURE: N/A

**STOREFRONT**  
SF-1 STOREFRONT BASIS OF DESIGN TO BE:  
MFR: ???  
COLOR: BLACK  
SIZES: SEE AS 2 FOR GLAZING TYPES  
REFER TO AS SERIES WINDOW TYPES SHEET FOR MORE INFO

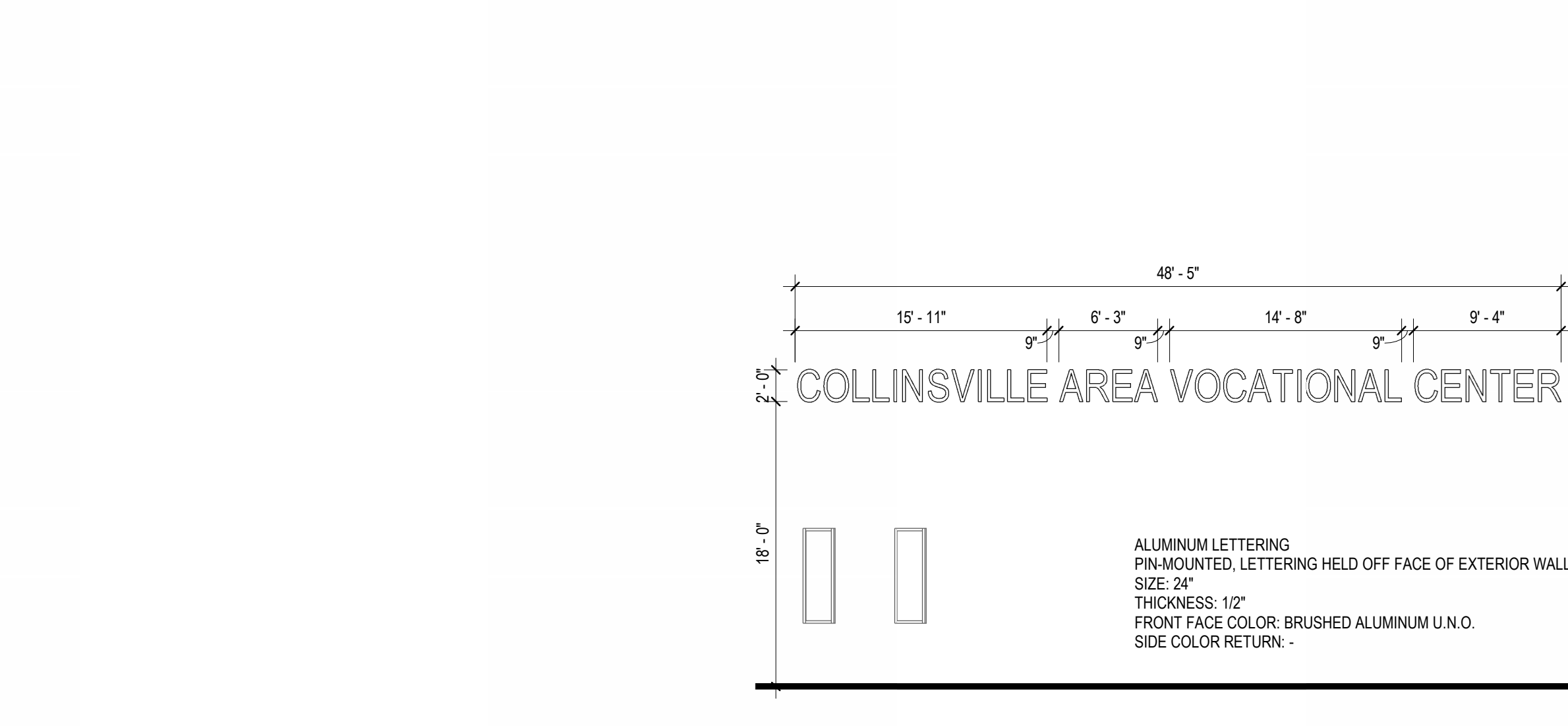
CW-1 CURTAINWALL BASIS OF DESIGN TO BE:  
MFR: ???  
COLOR: BLACK  
SIZES: SEE AS 2 FOR GLAZING TYPES  
REFER TO AS SERIES WINDOW TYPES SHEET FOR MORE INFO

**ROOF FASCIA**  
FA-1 FA-2 FASCIA ROOF EDGE TO BE:  
MFR: ???  
STYLE: ???  
SIZE: #4" FACE HEIGHT  
FA-1 COLOR: MATTE BLACK

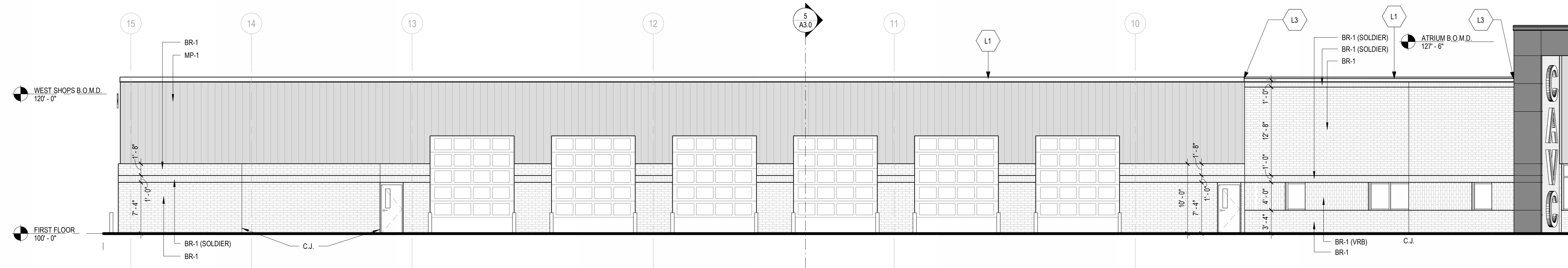
EXTERIOR ELEVATIONS KEYED NOTES	
TAG	DESCRIPTION
L1	PRE-FINISHED METAL COPING
L2	PIN-MOUNTED STAND OFF, EXTERIOR GRADE DIMENSIONAL ALUMINUM LETTERINGS, 1/2" THICK, FONT TBD. SEE ELEVATIONS FOR DIMENSIONS.
L3	BUILDING EXPANSION JOINT
L4	PIN-MOUNTED STAND OFF, BACKLIT, EXTERIOR GRADE DIMENSIONAL ALUMINUM LETTERING, 2" THICK, FONT TBD. SEE ELEVATIONS FOR DIMENSIONS.
L5	MCM REVEAL H MOLDING EXTRUSION. SEE DTL. 11A2.0 FOR ADDITIONAL INFORMATION.



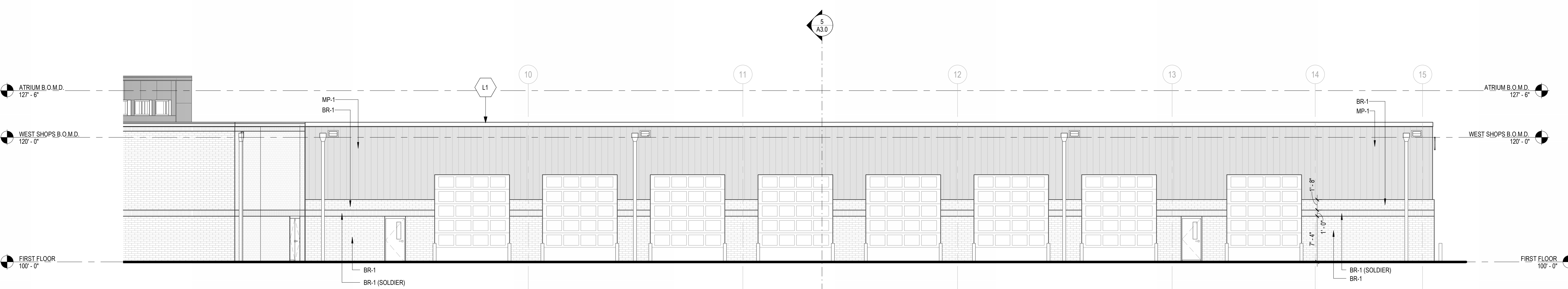
**3 WEST ELEVATION - AUTOMOTIVE WING**  
1/8" = 1'-0"



**4 EXTERIOR SIGNAGE**  
1/8" = 1'-0"



**2 SOUTH ELEVATION - AUTOMOTIVE WING**  
1/8" = 1'-0"

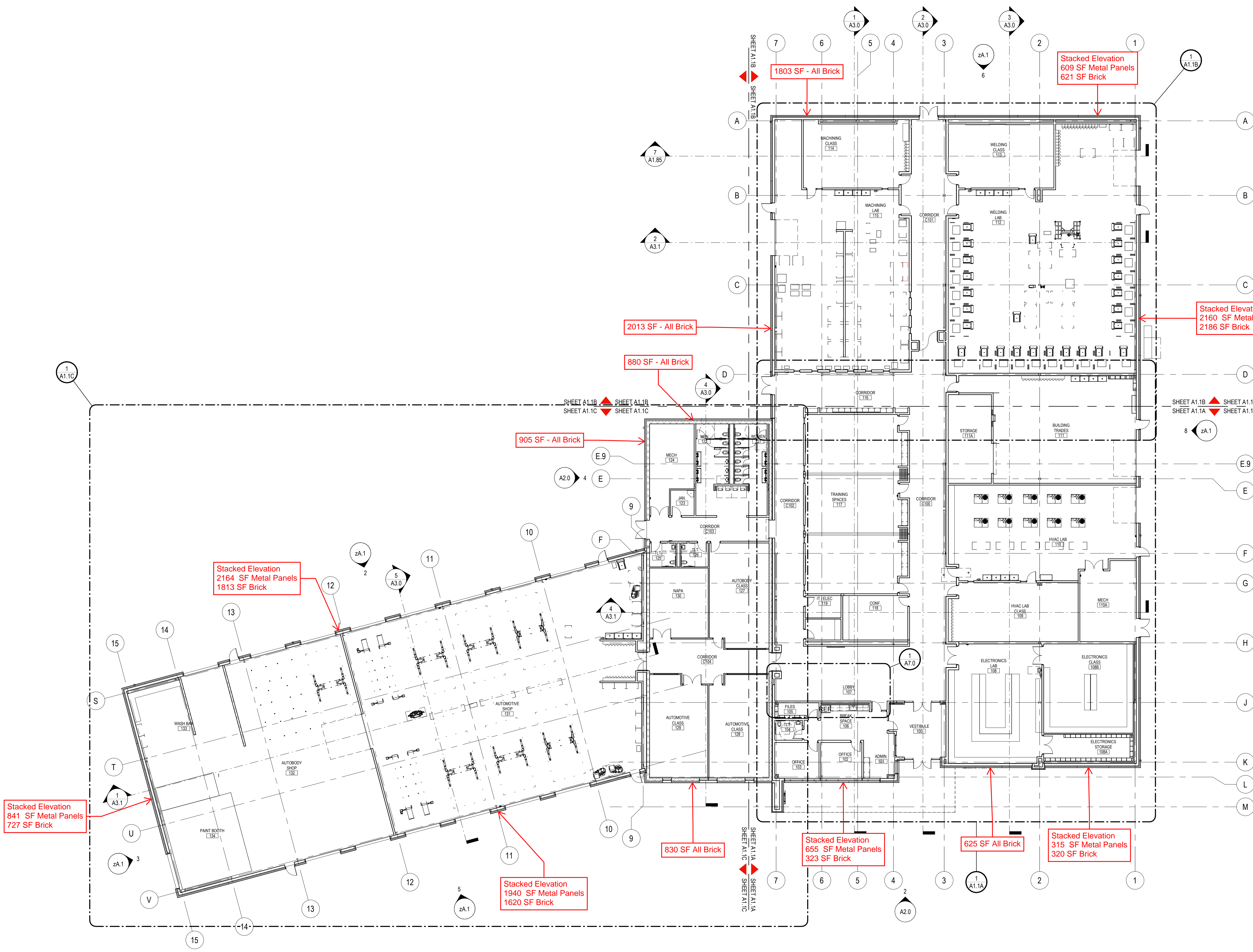


**1 NORTH ELEVATION - AUTOMOTIVE WING**  
1/8" = 1'-0"

ISSUANCE	
NO	DATE / DESCRIPTION

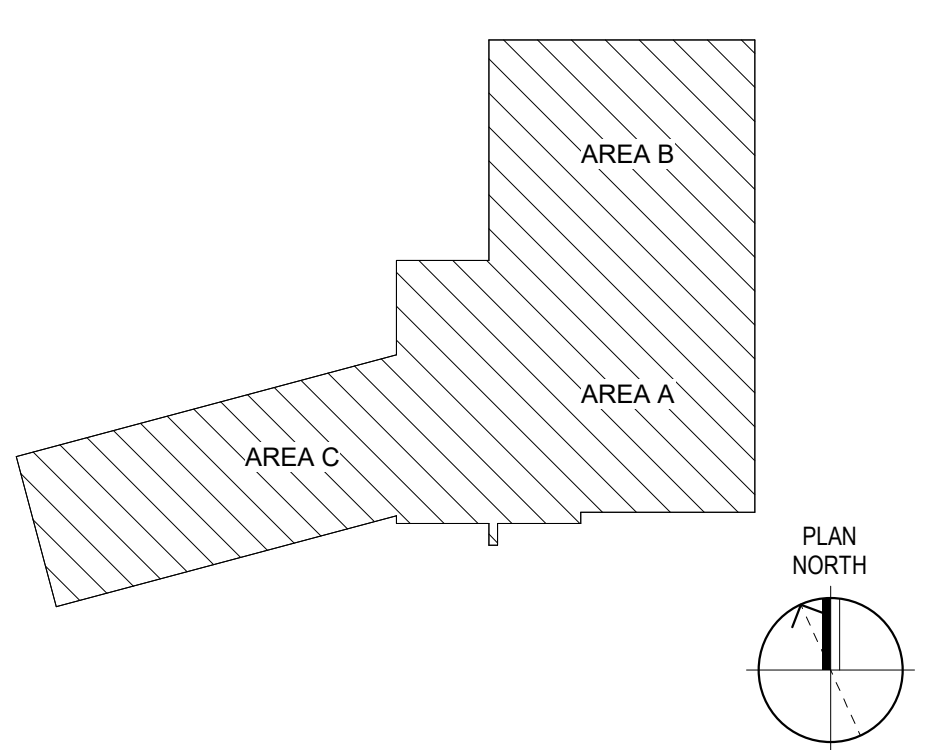
**COLLINSVILLE AREA VOCATIONAL CENTER NEW BUILDING**  
BOARD OF EDUCATION COLLINSVILLE CUSD 10  
COLLINSVILLE, IL, 62234  
  
50% CONSTRUCTION DOCUMENTS

**OVERALL FLOOR PLAN**  
  
SHEET NO. **A1.1**  
  
JOB NO. 22-3613.02  
© 2024 FGM Architects Inc.



- GENERAL FLOOR PLAN NOTES**
- REFER TO G-SERIES SHEETS FOR TYPICAL ABBREVIATIONS, SYMBOLS & TAGS.
  - REFER TO PARTITION TYPES FOR THICKNESS OF WALLS AND PARTITIONS.
  - WALL AND PARTITION DIMENSIONS ARE SHOWN TO FINISHED FACE OF WALL.
  - DIMENSIONS FOR AREAS DRAWN AT A LARGER SCALE ARE SHOWN ON ENLARGED SCALE PLANS. SEE A4 SERIES DRAWINGS.
  - FOR PARTITION TYPES, SEE A6 SERIES DRAWINGS.
  - FOR TYPICAL COLUMN ENCLOSURE DETAILS, SEE A4 SERIES DRAWINGS.
  - FOR FINISH PLAN, SEE A1 SERIES DRAWINGS.
  - FOR DOOR AND FRAME INFORMATION, SEE A5 SERIES DRAWINGS.
  - FOR WINDOW AND STOREFRONT TYPES, SEE ELEVATIONS ON A5 SERIES DRAWINGS.
  - FOR EXTERIOR ENVELOPE DETAILS, SEE A3 SERIES DRAWINGS.
  - FOR LARGE SCALE PLANS, SEE A4 SERIES DRAWINGS.
  - FOR INTERIOR ELEVATIONS, SEE A4 SERIES DRAWINGS.
  - FOR CEILING INFORMATION, SEE A1 SERIES DRAWINGS.
  - FOR STAIR INFORMATION, SEE A3 SERIES DRAWINGS.
  - FOR SPECIAL FINISHES, PATTERNS, ETC., SEE A1 SERIES DRAWINGS.
  - FOR TYPICAL ROOM SIGNS AND FIRE EXTINGUISHER CABINET DETAILS, SEE A6 SERIES DRAWINGS.
  - FURNITURE AND EQUIPMENT SHOWN DOTTED IS NOT IN CONTRACT AND IS SHOWN FOR COORDINATION PURPOSES.
  - SEE SPECIFICATION SECTION 011000 - "PROJECT SUMMARY" FOR RESPONSIBILITY FOR WORK UNDER OTHER CONTRACTS AND FOR OWNER FURNISHED - CONTRACTOR INSTALLED WORK.

**1 OVERALL FLOOR PLAN**  
1/16" = 1'-0"



## 1. PRODUCT NAME

**KNOTWOOD™**  
Cladding System

## 2. MANUFACTURER

**OmniMax International**  
30 Technology Pkwy. S, Suite 400  
Peachtree Corners, GA 30092  
Phone: 855.566.8966

## 3. PRODUCT DESCRIPTION

Knotwood™ Cladding is made from 100% aluminum protected by a durable powder coat finish. It's immune to fire, rust, rot, insects and will never warp, split or crack. Even extreme heat or freezing cold can't damage Knotwood™. Sublimated in Knotwood's award winning woodgrain finish or custom solid color coated, it meets the highest finishing standards in the world.

Knotwood's unique hidden fastener system creates a clean finish. The interlocking system makes Knotwood™ cladding a smart choice when water penetration is a concern. In the event repairs are needed, Knotwood's unique top-down interlocking board system installation makes bottom up repairs fast and simple. In addition, Knotwood™ cladding requires next to no maintenance.

**Sizes:**  
Cladding comes in 18' 6" lengths.  
Accessories come in 18' 6" lengths.

**Colors:**  
A wide variety of over 30 woodgrain colors as well as solid and custom color options.

## 4. TECHNICAL DATA

Material/Paint & Coatings Data:

- 100% Recyclable
- VOC-free coatings
- Lead free finishes
- LEED Certified Green Building Material

Non-Combustible Ratings:

- ASTM E84
- ASTM E84-17
- Class A Rating

Florida Building Code Ratings:

- Meets requirements of Section 1620
- Meets requirements of Section 1625
- Meets requirements of Section 1626

## 5. INSTALLATION

Interlocking cladding boards are attached with a unique hidden fastener system to create a clean finish, hiding unsightly screws or rivets.

## 6. AVAILABILITY & COST

**Availability:**

Cladding systems are available through Knotwood™ distributors. A complete line of related Knotwood™ systems are available to complete any cladding system. In addition, custom color matching is available.

**Cost:**

Contact Knotwood™ product distributors for current pricing. **Contact at - [www.knotwood.com/contact-us](http://www.knotwood.com/contact-us)**

## 7. WARRANTY

Knotwood™ expressly warrants for a limited lifetime that its aluminum products are free from manufacturing defects in material or workmanship when installed according to Knotwood™ specifications and properly maintained. The warranty provides for a 15-year warranty for the Knotwood finish, including checking/cracking, chalking, color change, gloss retention and adhesion of finish.

***The full warranty details are provided at [www.knotwood.com/warranty](http://www.knotwood.com/warranty)***

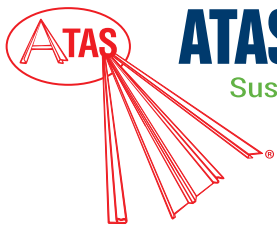
## 8. MAINTENANCE

Our products are designed to be effortless and low maintenance. Wash the surface with a mild solution of pure soap or mild non-abrasive kitchen detergent in warm water. Application should be with a sponge, soft cloth or soft bristle nylon brush, and should be gentle to prevent shiny spots. If cared for in this way, your Knotwood™ application should give many years of easy maintenance life.

## 9. TECHNICAL SERVICES

Complete technical information and literature available at **[www.knotwood.com/architects](http://www.knotwood.com/architects) - *Click here.***





## 1. PRODUCT NAME

### VERSA-LINE PANEL

### VSN120, VSN160

## 2. MANUFACTURER

ATAS INTERNATIONAL, INC.

Website: [www.atas.com](http://www.atas.com)

Email: [info@atas.com](mailto:info@atas.com)

Corporate Headquarters:

Allentown, PA 18106

Phone: (800) 468-1441

Western Facility:

Mesa, AZ 85204

Phone: (480) 558-7210

## 3. PRODUCT DESCRIPTION

### Basic Uses:

Versa-Line is a rainscreen style wall system that requires a water and air barrier system behind it. The panel forms architectural shadow lines in its horizontal installation.

### Composition & Materials:

**Standard Offerings:** Versa-Line panels are produced from .032 and .040 aluminum

**Special Offerings:** .7, .8 mm zinc; 16 oz. copper, subject to minimum quantities and lead time.

### Sizes:

Versa-Line panels are available in standard sizes with a panel width of 12'-3/8", 16'-3/8" and 1" height. Panel lengths are cut to customer specifications with a minimum of 2'-0" and maximum of 25'-0". Custom widths available with a minimum of 8" and a maximum of 20'-5/8". Specify with or without striations.

### Colors & Finishes:

A choice of over 40 stock colors is available in a 70% PVDF finish. (Request color chart or chips). Custom colors available. An anodized finish is available in Clear Satin or Dark Bronze. Texture can be smooth or stucco embossed. Perforations are available.

## 4. TECHNICAL DATA

70% PVDF based finishes tested by paint supplier for:

- Dry Film Thickness: ASTM D 1005, ASTM D 1400, ASTM D 4138 or ASTM D 5796
- Specular Gloss: ASTM D 523
- Pencil Hardness: ASTM D 3363
- T-Bend Flexibility: ASTM D 4145
- Mandrel Bend Flexibility: ASTM D 522
- Impact Resistance: ASTM D 2794
- Adhesion: ASTM D 3359
- Water Immersion Resistance: ASTM D 870
- Abrasion Resistance: ASTM D 968
- Acid Resistance: ASTM D 1308
- Acid Rain Resistance (Kesternich): ASTM G

87 or DIN 50018

- Salt Spray: ASTM B 117
- Cyclic Salt Spray: ASTM D 5894 and ASTM D 5487
- Humidity Resistance: ASTM D 2247
- Accelerated Weathering: ASTM D 822 and ASTM G 155, ASTM G 151 or ASTM G 153
- Color Retention, Florida Exposure: ASTM D 2244
- Chalking Resistance: ASTM D 4214
- Cleveland Condensing Cabinet: ASTM D 4585
- Cure Test, MEK Resistance: ASTM D 5402
- Alkali Resistance, Sodium Hydroxide: ASTM D 1308, Procedure 7.2
- Flame Spread Rating: ASTM E 84
- Organic coatings meet requirements of AAMA 2605 when applied to aluminum.

### Panel testing/ratings:

- Aluminum: ASTM B 209
- Coil Coating: ASTM A 755

## 5. INSTALLATION

Versa-Line may be installed horizontally or vertically. Panels can be installed over a solid substrate covered with an appropriate water and air barrier system or sub-girt system in a rainscreen application. Installation details and hands-on training via seminars are available through ATAS. Visit [www.atas.com](http://www.atas.com) for more information.

## 6. AVAILABILITY & COST

### Availability:

Versa-Line panels are available through ATAS product distributors. A complete line of related components and trim accessories is available to complete the system. In addition, a complete line of rainware and perimeter roof edge trims can be

supplied by ATAS to complement the application. Flat sheet and/or coil stock is available in matching colors for fabrication of related components by the installing contractor. \*Subject to minimum quantities and extended lead times.

### Cost:

Contact ATAS product distributors for current pricing.

## 7. WARRANTY

The fluoropolymer, 70% PVDF finish carries a limited warranty against chalking and fading.

## 8. MAINTENANCE

Versa-Line panels require minimal maintenance. Surface residue may be easily removed by conventional cleaning methods. For painted products, minor scratches should be touched up with a matching paint, available from the manufacturer.

## 9. TECHNICAL SERVICES

Complete technical information and literature are available at [www.atas.com](http://www.atas.com). ATAS will assist with design ideas and shop drawings.

## 10. FILING SYSTEM

- [www.atas.com](http://www.atas.com)
- Additional product information is available from the manufacturer upon request.

